



North Sacramento River Corridor Interbasin Coordination

NSRC IBC Framework Update and Regional Interconnected Surface Water Initiative

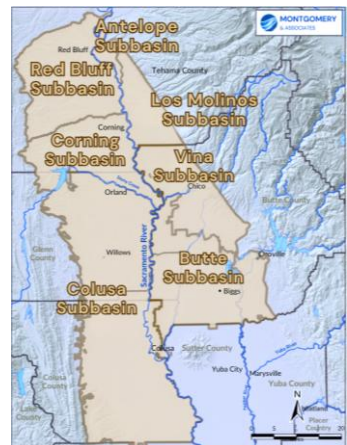
[North Sacramento River Corridor Inter-Basin Coordination | Butte County, CA](#)

Stakeholder Advisory Committee | June 24, 2026 | Dillon McGregor, Program Manager

1

IBC Framework Re-cap

- During Groundwater Sustainability Plan (GSP) development leading up to 2022 submission of GSPs, 11 Northern Sacramento Valley subbasins prepared an Interbasin Coordination Report which established a mutually agreed upon framework for sustained coordination during GSP implementation
- **GSA Representatives** from 7 subbasins which form the **North Sacramento River Corridor** (Antelope, Butte, Colusa, Corning, Los Molinos, Red Bluff, and Vina) initiated focused discussions last fall to begin developing a **5-Year Update** to consistently **implement this regional framework** as a part of the state required GSP Periodic Evaluations due Jan 2027.
- Neighbor to neighbor interbasin coordination may be occurring in addition to these regional discussions.

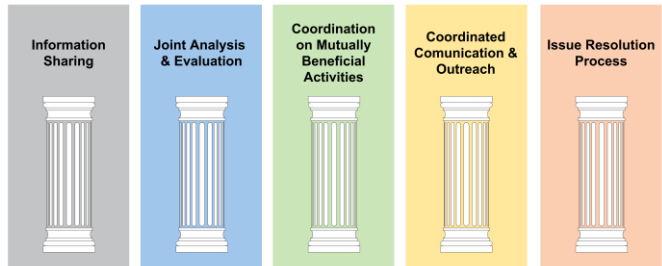


2

2

The 5-Pillar Coordination Framework

- The framework operates through **5 collaborative pillars** that GSAs have committed to
- The 5-Year Implementation Update details GSAs' priorities for advancing the Pillars through 2032



3

Pillar 1 - Information Sharing

- Subbasin representatives meet **at least** annually to stay informed about changing conditions, exchange information, and collaborate on shared priorities
- GSAs share annual reports, monitoring data, water budgets, and modeling information, and work towards building shared data resources across boundaries

Pillar 2 - Joint Analysis & Evaluation

- Completed in 2025 to evaluate and compare contents of GSPs with a focus on gaining a common understanding of basin conditions at boundaries
- Identified key differences, data uncertainties, and assessed potential impacts of concerns related to groundwater interaction at the boundaries

4

Pillar 3 - Coordination on Mutually Beneficial Activities

Informed by DWR's Recommended Corrective Actions for all Subbasin GSPs, a regional priority rose to the top for this next 5-year period-- to develop a coordinated approach to interconnected surface waters, including shared monitoring and modeling strategies, and pursuit of grant funding

Additional areas for exploration include boundary flow analysis, joint monitoring to identify data gaps, and collaborative project development such as regional recharge opportunities



5

Pillar 3 - Coordination on Mutually Beneficial Activities

FOCUS Interconnected Surface Waters (ISW): A Shared Challenge



SGMA REQUIRES LOCAL AGENCIES TO UNDERSTAND HOW GROUNDWATER PUMPING AFFECTS NEARBY RIVERS AND STREAMS (A RELATIONSHIP KNOWN AS ISW)



DWR ISSUED EVERY SUBBASIN IN THE NORTH SACRAMENTO RIVER CORRIDOR A RECOMMENDED CORRECTIVE ACTION (RCA) FOR ISW, MAKING IT A COMPLIANCE OBLIGATION FOR ALL 7 SUBBASINS



THIS VALLEY IS HYDROLOGICALLY CONNECTED, MEANING THE EFFECTS OF PUMPING ON STREAMFLOW DO NOT STOP AT SUBBASIN BOUNDARIES, PROMPTING A REGIONAL APPROACH



ADDRESSING ISW TOGETHER KEEPS COSTS LOWER AND PRODUCES TOOLS THAT ARE COMPATIBLE AND ACCESSIBLE ACROSS ALL 7 SUBBASINS

6

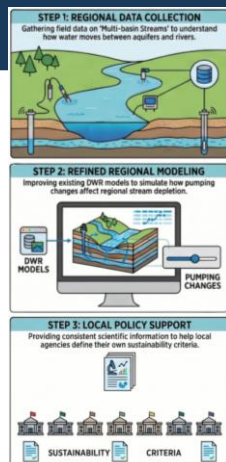
Pillar 3 - Coordination on Mutually Beneficial Activities

FOCUS What's Proposed

Regional Data Collection: Field teams would collect measurements along the Sacramento River, Feather River, Butte Creek, and other shared streams to improve understanding of how water moves between rivers and underground aquifers across the region.

Refined Regional Modeling: Using that data, technical teams would work with DWR to improve an existing regional model so they can better simulate how groundwater pumping affects streamflow across subbasin boundaries.

Local Policy Support: Drawing on the modeling results, a regional guidance document would provide each agency with options and examples to define its own sustainability standards – while each agency retains full authority over its own decisions.

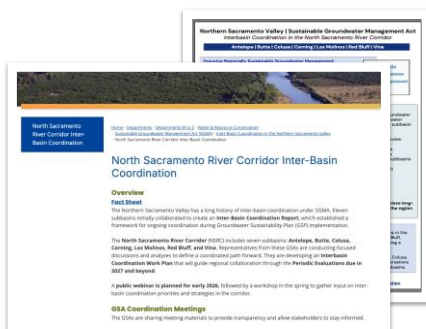


7

Pillar 4 - Coordinated Communication & Engagement

Continued collaboration on regional-scale public engagement and communications that promote awareness, enhance public trust, and maintain knowledge

- Public Meetings
- Outreach and engagement materials (factsheets, etc.)
- Ongoing maintenance of interbasin coordination website with updates, meeting materials, and work products



8

Pillar 5 - Issue Resolution Process



All participating subbasins have agreed to a shared process for identifying and resolving conflicts, following the framework established in the Northern Sacramento Valley Interbasin Coordination Report



The process can be activated as needed, ensuring that disputes have a clear, agreed upon pathway for resolution



With this 5-Year Implementation Update of the Framework, GSAs intend to use consistent language across their individual Periodic Evaluations when describing regional Interbasin Coordination

9

What This Means for Vina

Better Information



A shared regional model gives Vina more reliable, consistent data for ISW evaluations, boundary flow analyses, and cross-boundary impact assessments than we could build alone.

Lower Cost



Collaborative data collection and modeling costs significantly less than seven subbasins independently duplicating the same work, with results that are actually comparable.

SGMA Compliance Support



The regional approach is designed to help each subbasin respond to its DWR Recommended Corrective Action on ISW, a direct compliance obligation for Vina's Periodic Evaluation.

Local Authority Preserved



This joint effort does not transfer any decision-making authority. Vina sets its own sustainability criteria. The regional work provides shared information to inform those decisions.

Vina has been an active participant in IBC since the framework's founding. This regional ISW effort is the natural next step.

10

Next Steps and Requested Action

Near Term

- GSA representatives continue meeting through summer 2026 to finalize the IBC Framework 5-Year Implementation Update
- Vina Board invited to review the framework update and ISW work plan later this summer
- Vina PE incorporates the framework update and IBC commitments (due January 2027)

Longer Term

- Regional ISW work plan (data collection, model refinement, and local policy guidance) developed 2027 to 2032
- ISW work expected to support Vina's compliance with its DWR Recommended Corrective Action
- Potential funding through Proposition 4 being explored

Requested Action: Receive this report and provide feedback on the NSRC IBC Framework 5-Year Implementation Update and the proposed regional Interconnected Surface Water approach.