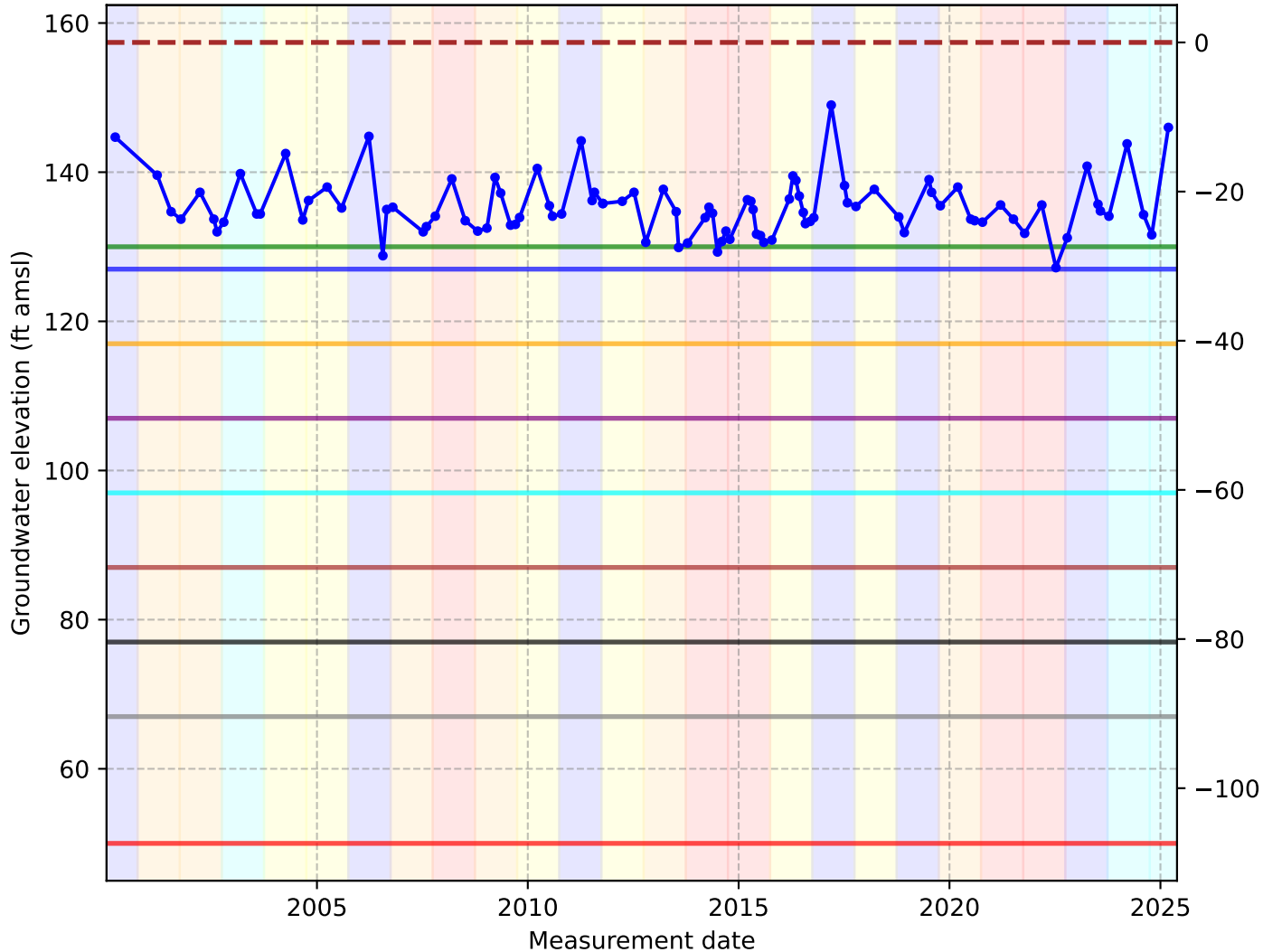
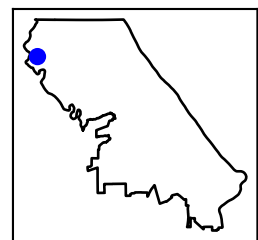


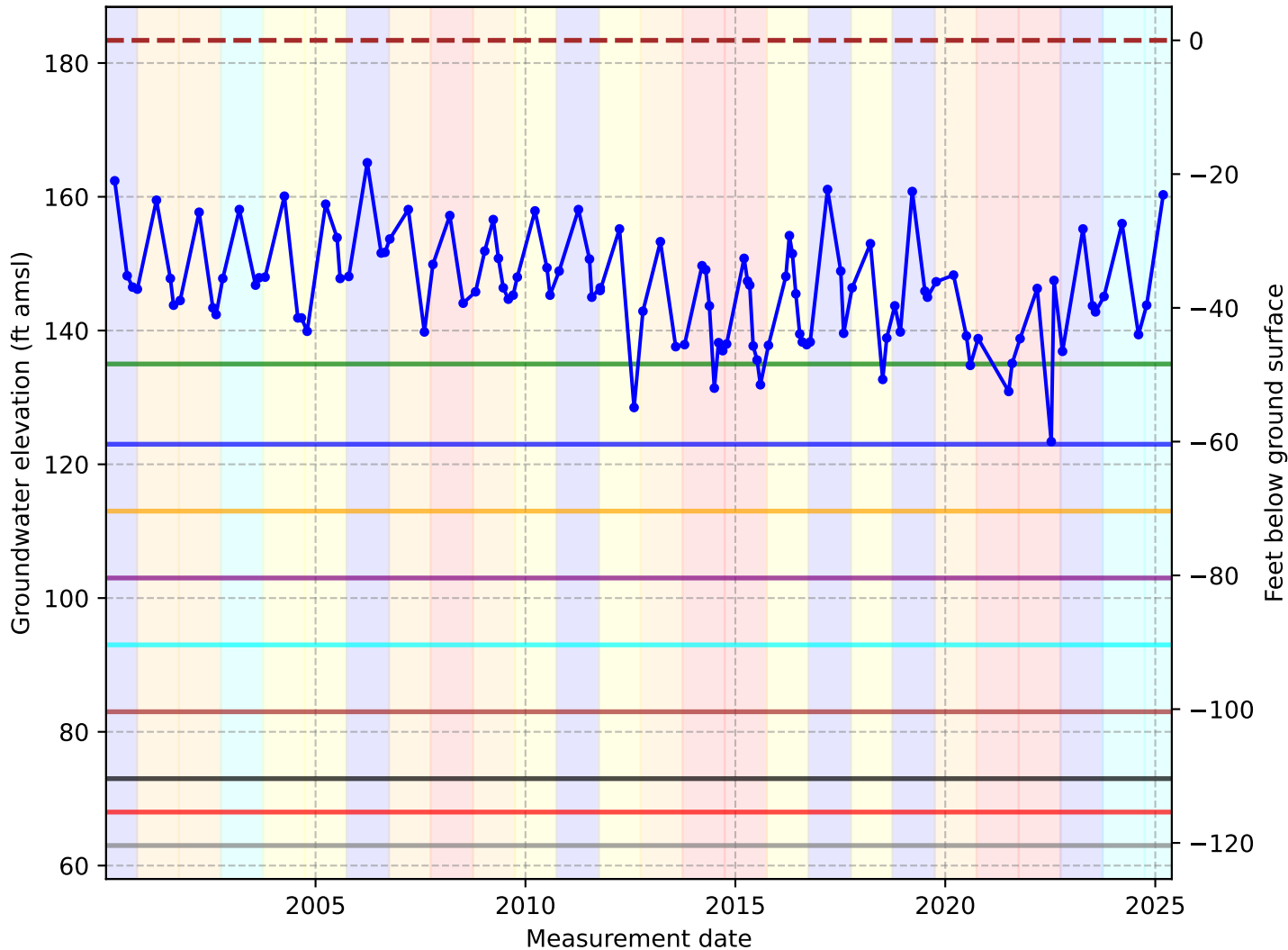
Vina Subbasin - State Well Number (SWN): 23N02W25C001M



- Legend**
- Minimum Threshold (50 ft amsl) - 33% of wells at-risk
 - Measurable Objective (130 ft amsl) - 0% wells at-risk
 - Hist. Low (127 ft amsl) - 0% of wells at-risk
 - Hist. Low - 10 (117 ft amsl) - 0% of wells at-risk
 - Hist. Low - 20 (107 ft amsl) - 0% of wells at-risk
 - Hist. Low - 30 (97 ft amsl) - 33% of wells at-risk
 - Hist. Low - 40 (87 ft amsl) - 33% of wells at-risk
 - Hist. Low - 50 (77 ft amsl) - 33% of wells at-risk
 - Hist. Low - 60 (67 ft amsl) - 33% of wells at-risk
 - Observed
 - Ground Surface (157 ft amsl)
 - Critical
 - Dry
 - Below Normal
 - Above Normal
 - Wet

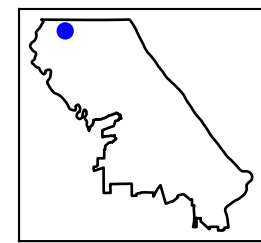


Vina Subbasin - State Well Number (SWN): 23N01W09E001M

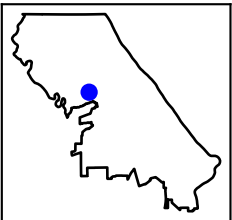
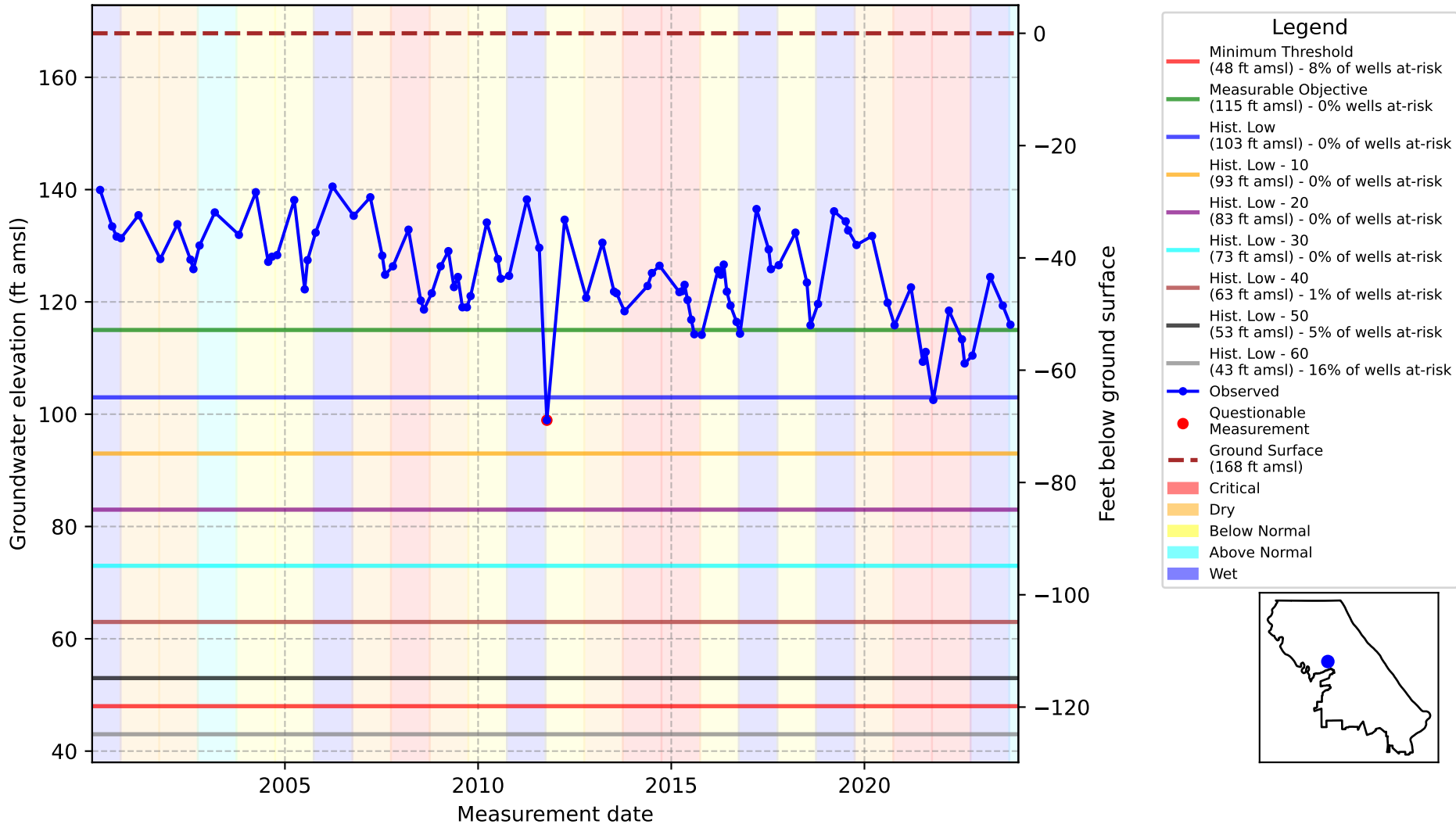


Legend

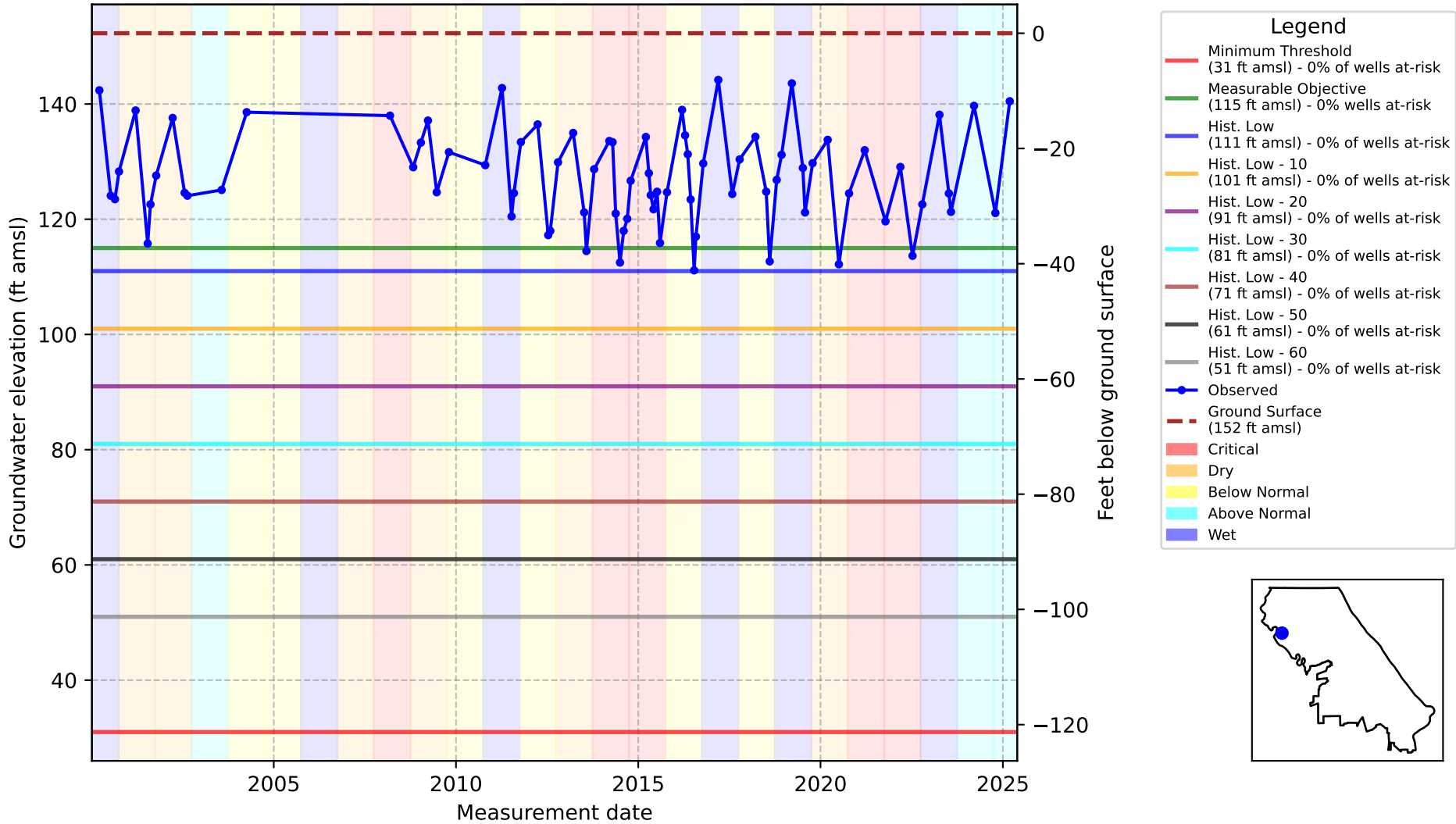
- Minimum Threshold (68 ft amsl) - 50% of wells at-risk
- Measurable Objective (135 ft amsl) - 0% wells at-risk
- Hist. Low (123 ft amsl) - 0% of wells at-risk
- Hist. Low - 10 (113 ft amsl) - 0% of wells at-risk
- Hist. Low - 20 (103 ft amsl) - 0% of wells at-risk
- Hist. Low - 30 (93 ft amsl) - 17% of wells at-risk
- Hist. Low - 40 (83 ft amsl) - 25% of wells at-risk
- Hist. Low - 50 (73 ft amsl) - 50% of wells at-risk
- Hist. Low - 60 (63 ft amsl) - 58% of wells at-risk
- Observed
- Ground Surface (183 ft amsl)
- Critical
- Dry
- Below Normal
- Above Normal
- Wet



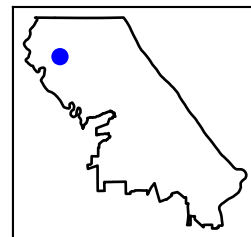
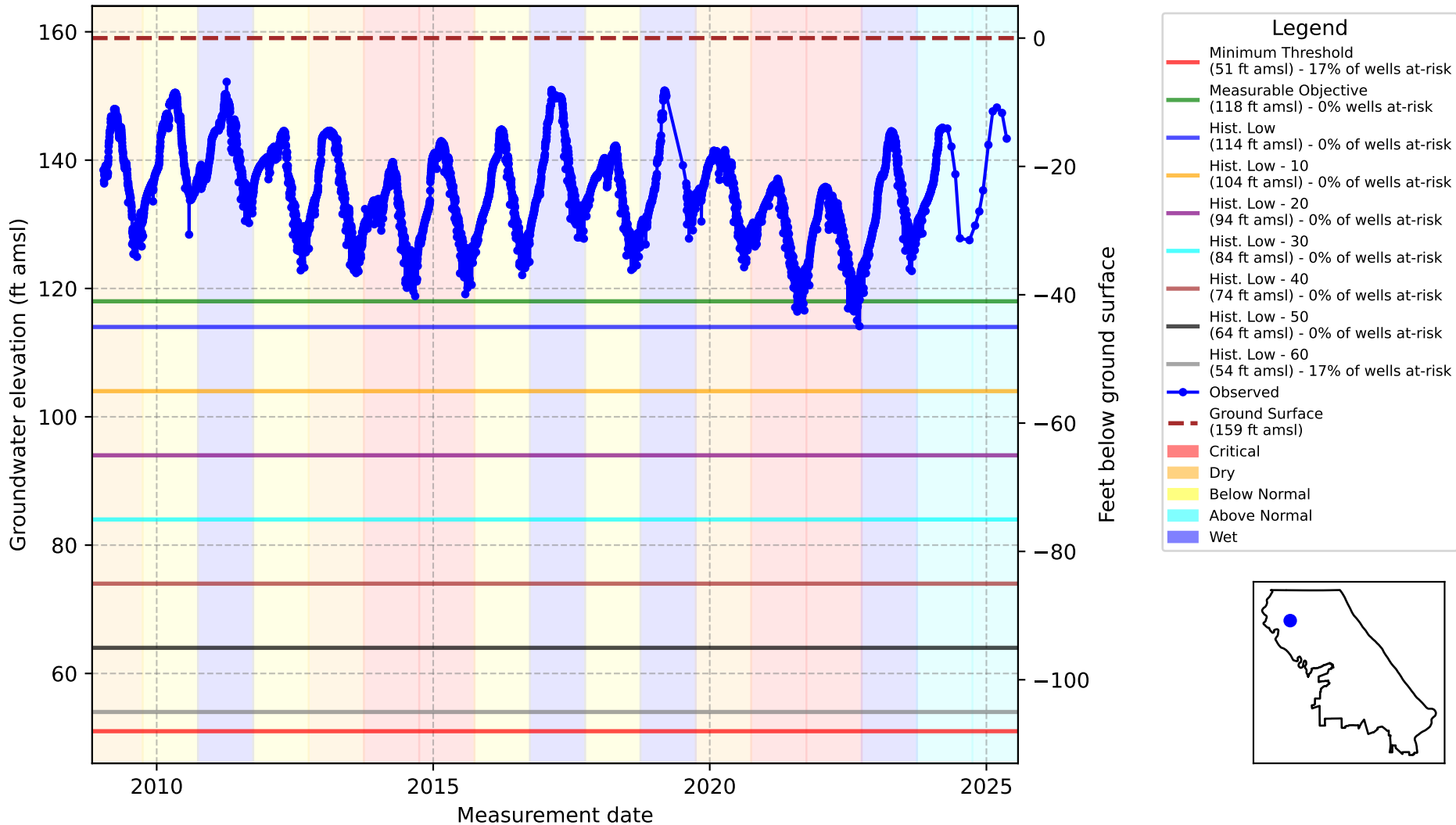
Vina Subbasin - State Well Number (SWN): 22N01E20K001M



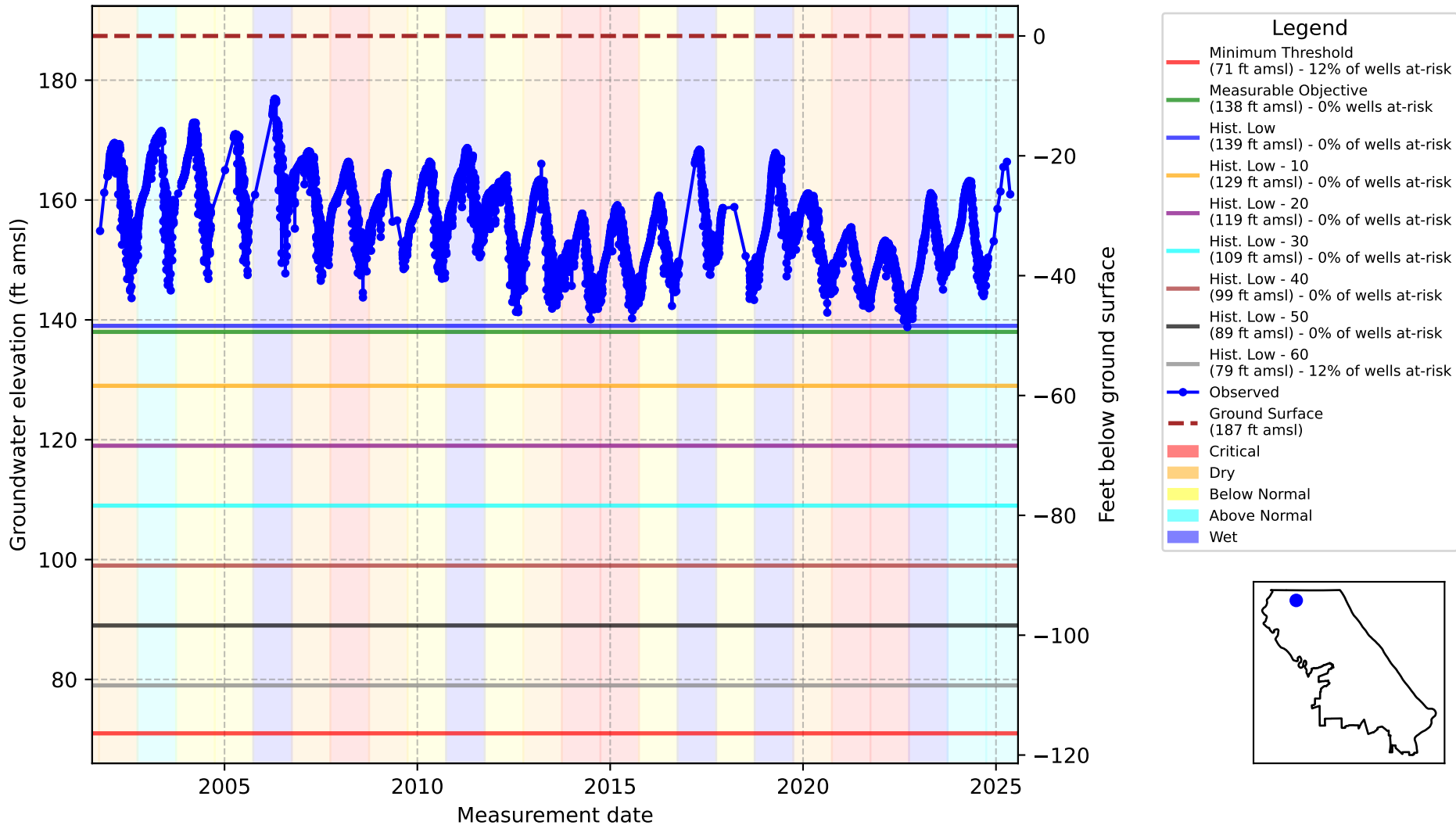
Vina Subbasin - State Well Number (SWN): 22N01W05M001M



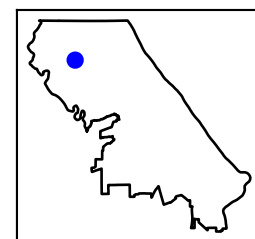
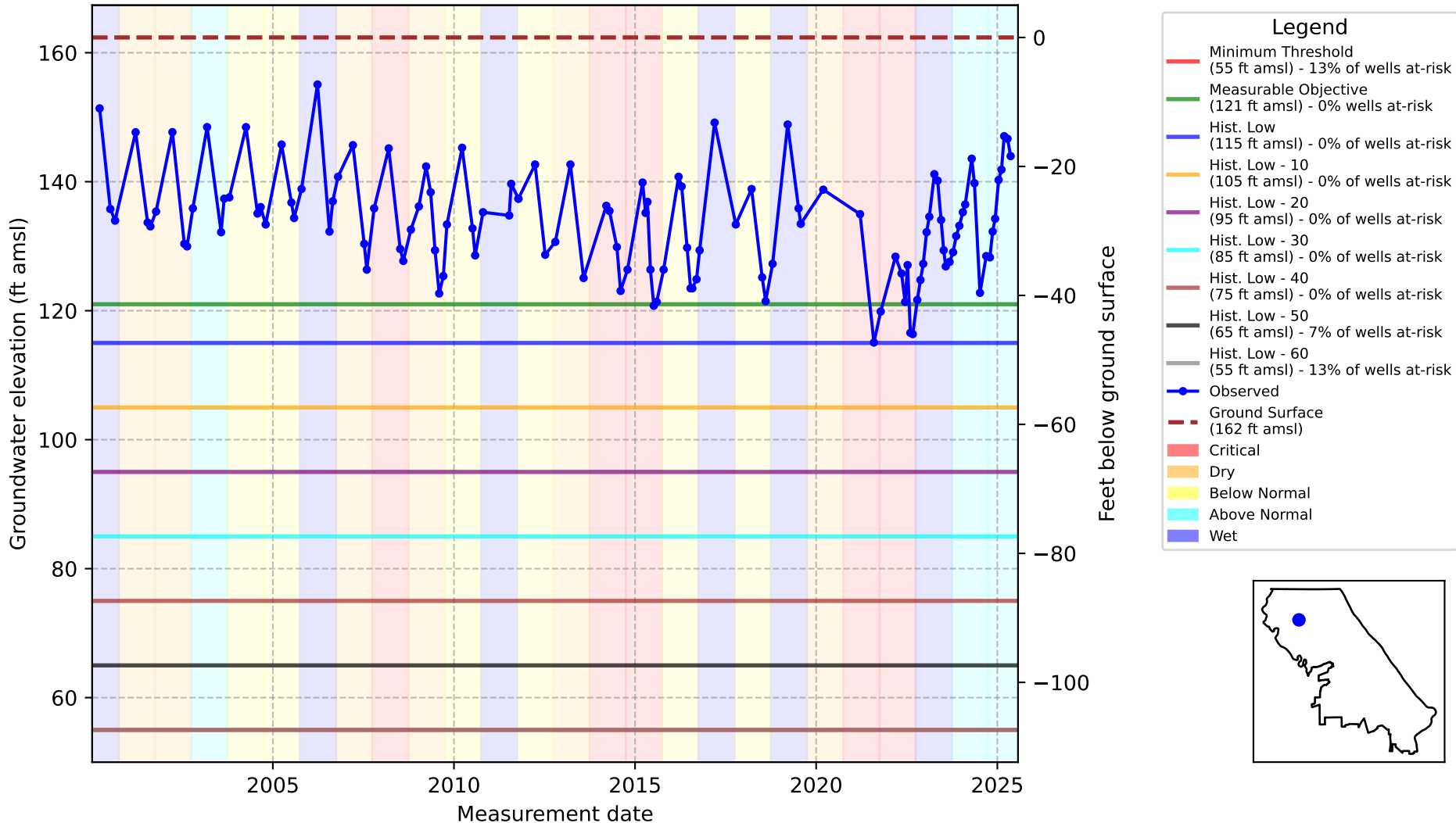
Vina Subbasin - State Well Number (SWN): 23N01W28M004M



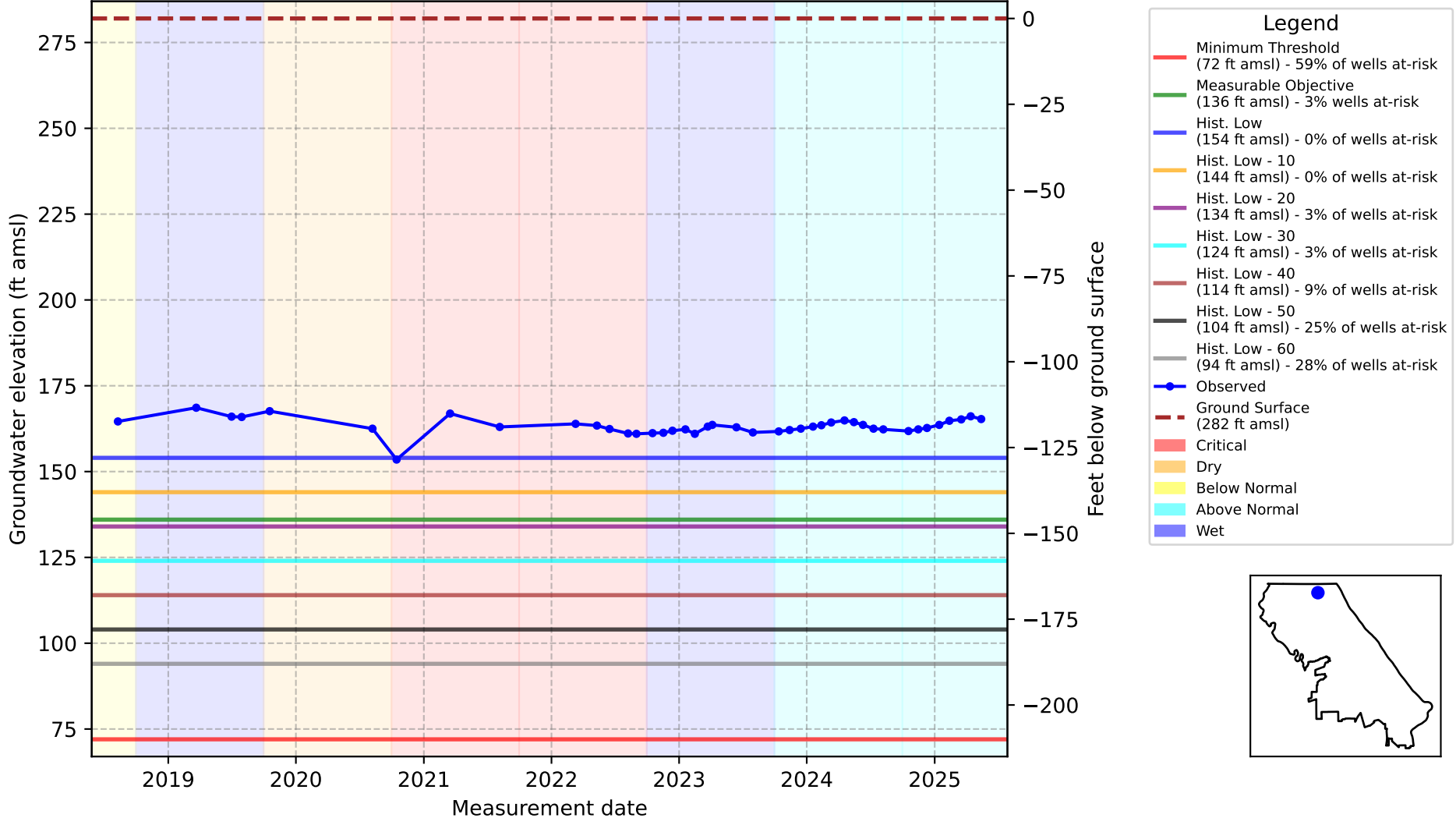
Vina Subbasin - State Well Number (SWN): 23N01W10M001M



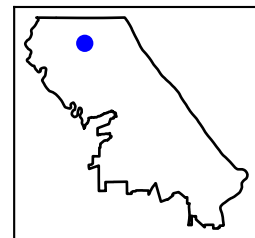
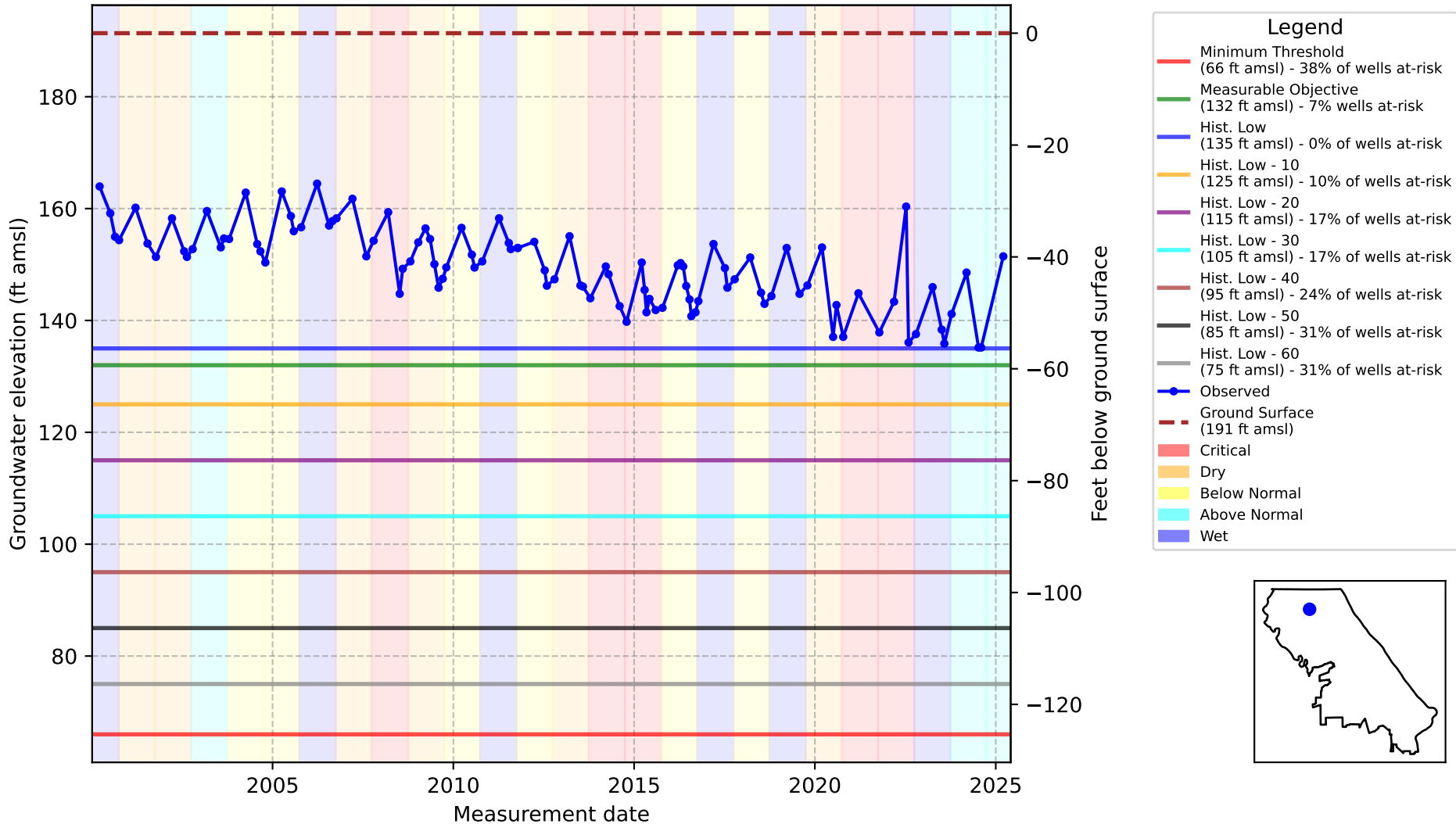
Vina Subbasin - State Well Number (SWN): 23N01W27L001M



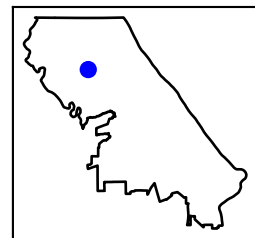
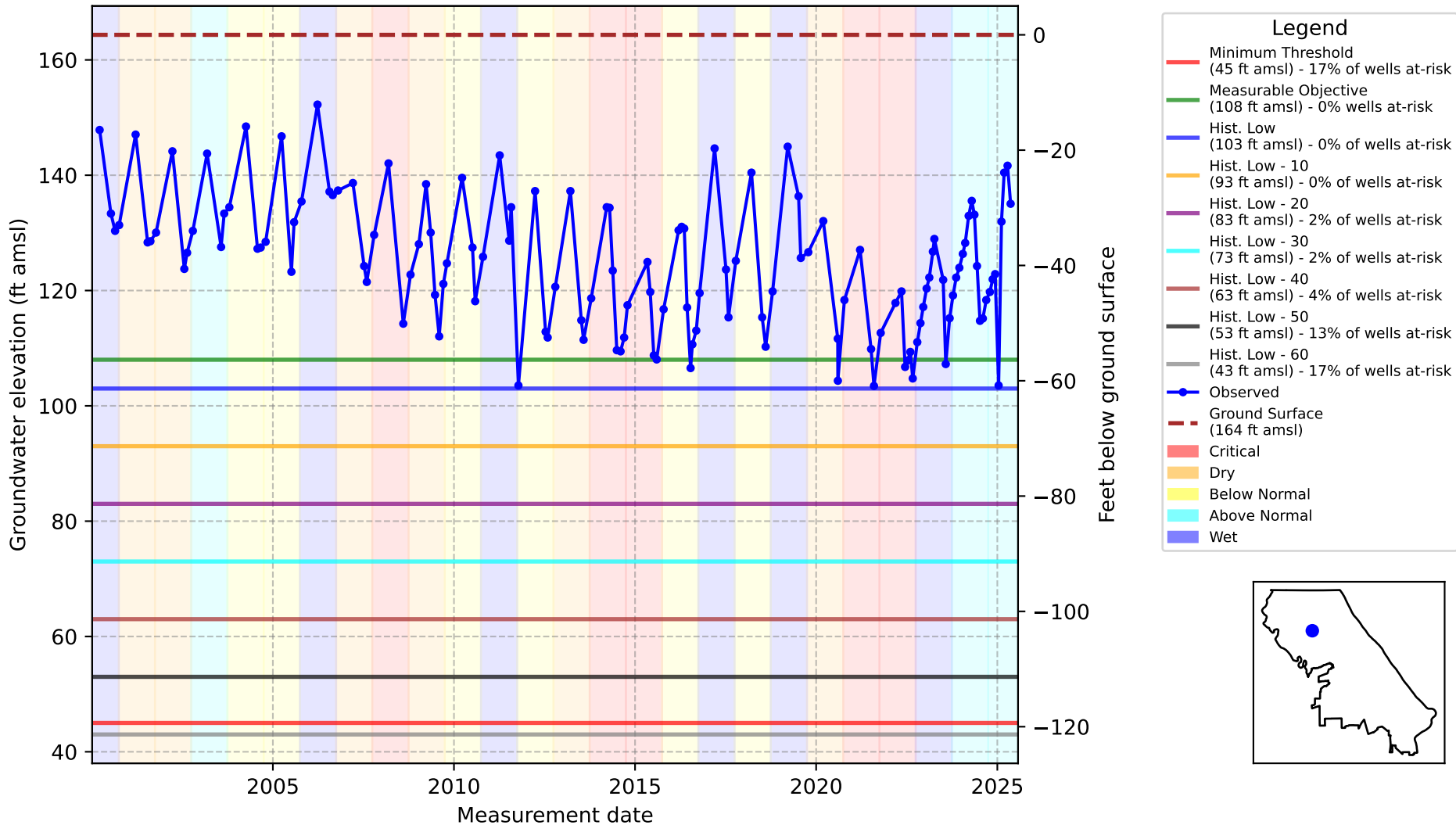
Vina Subbasin - State Well Number (SWN): 23N01E07H001M)



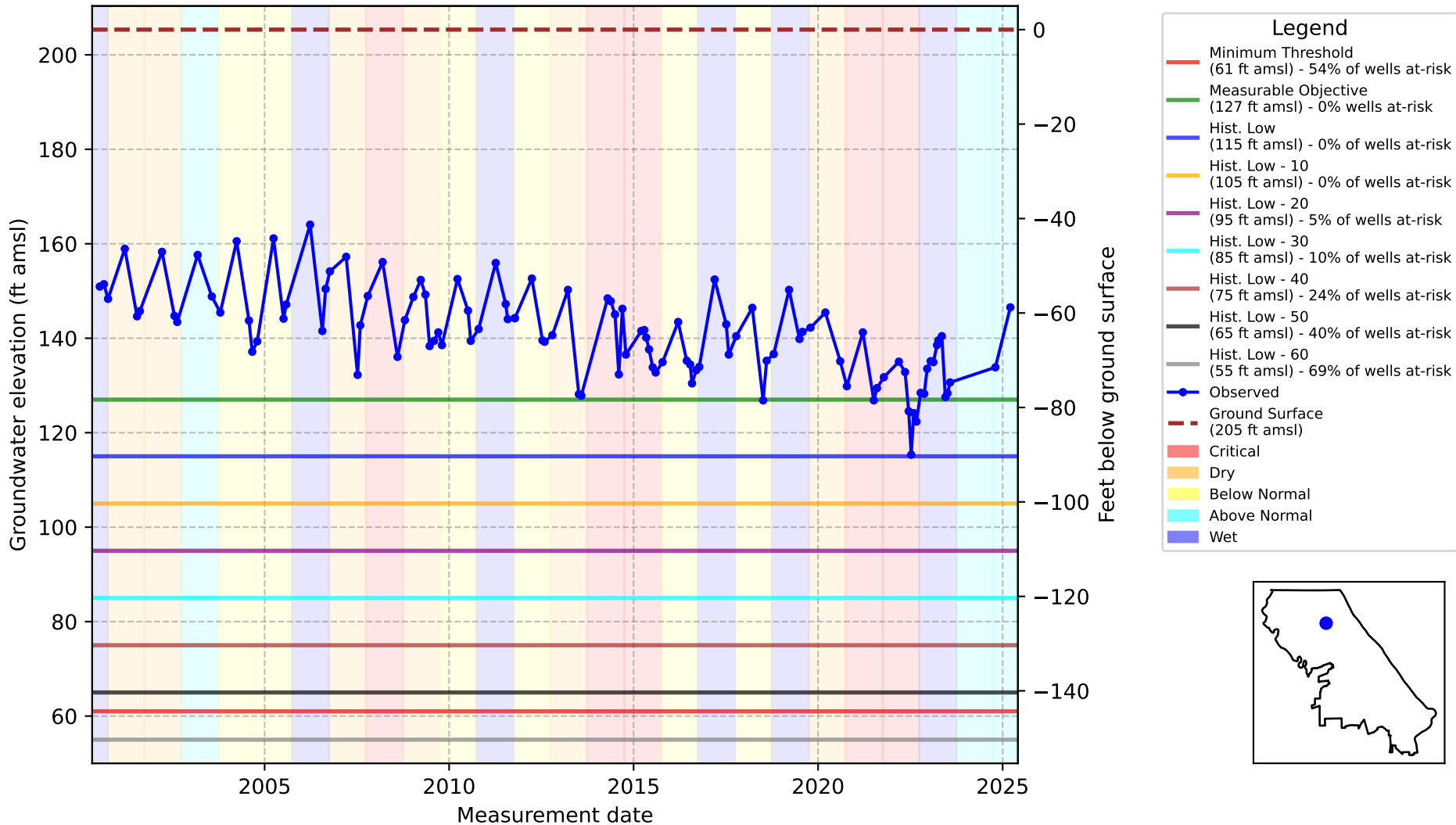
Vina Subbasin - State Well Number (SWN): 23N01W14R002M



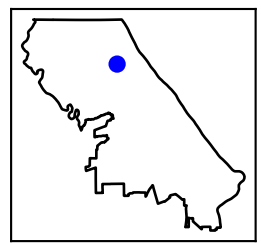
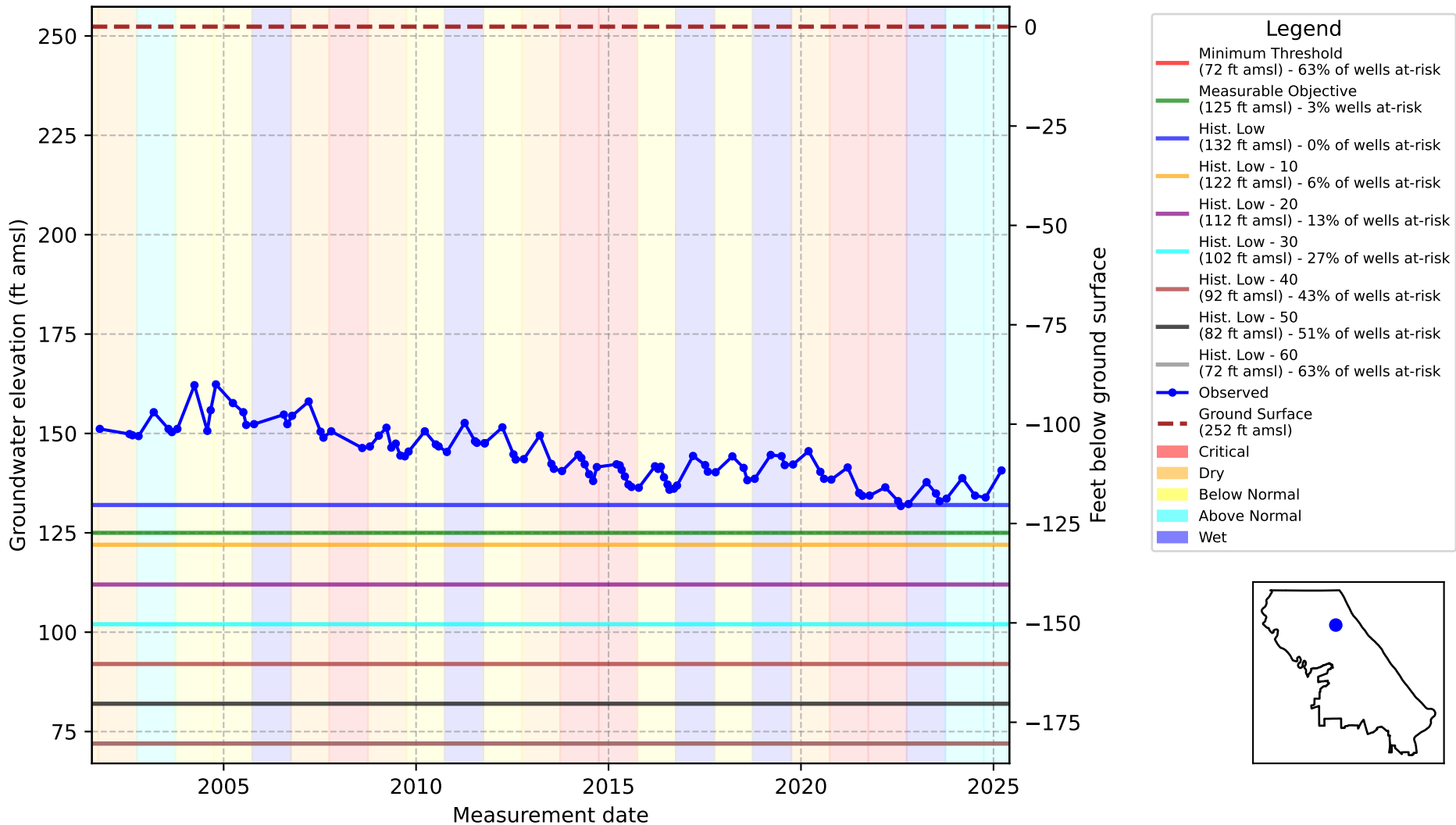
Vina Subbasin - State Well Number (SWN): 23N01W36P001M



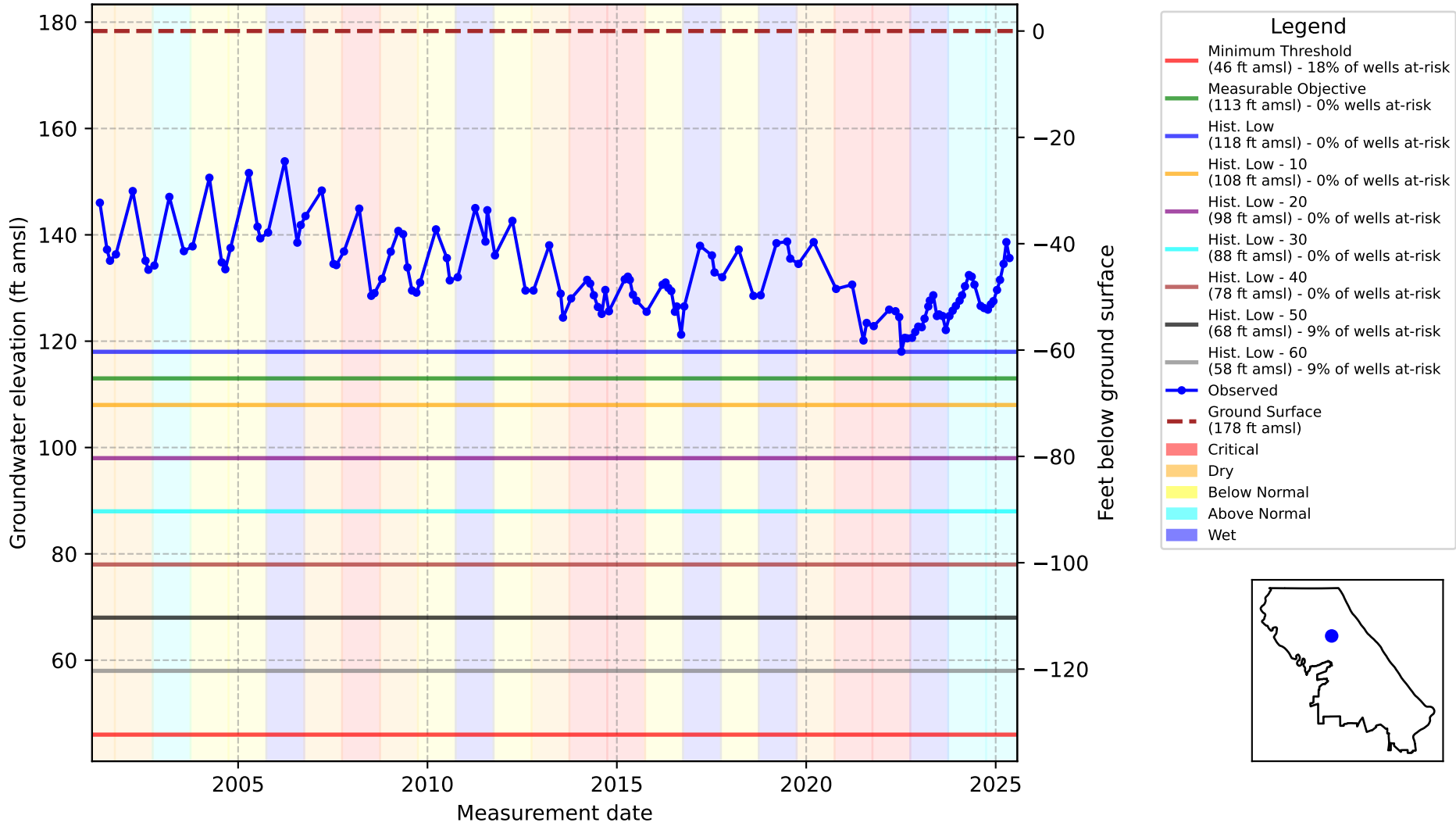
Vina Subbasin - State Well Number (SWN): 23N01E29P002M)



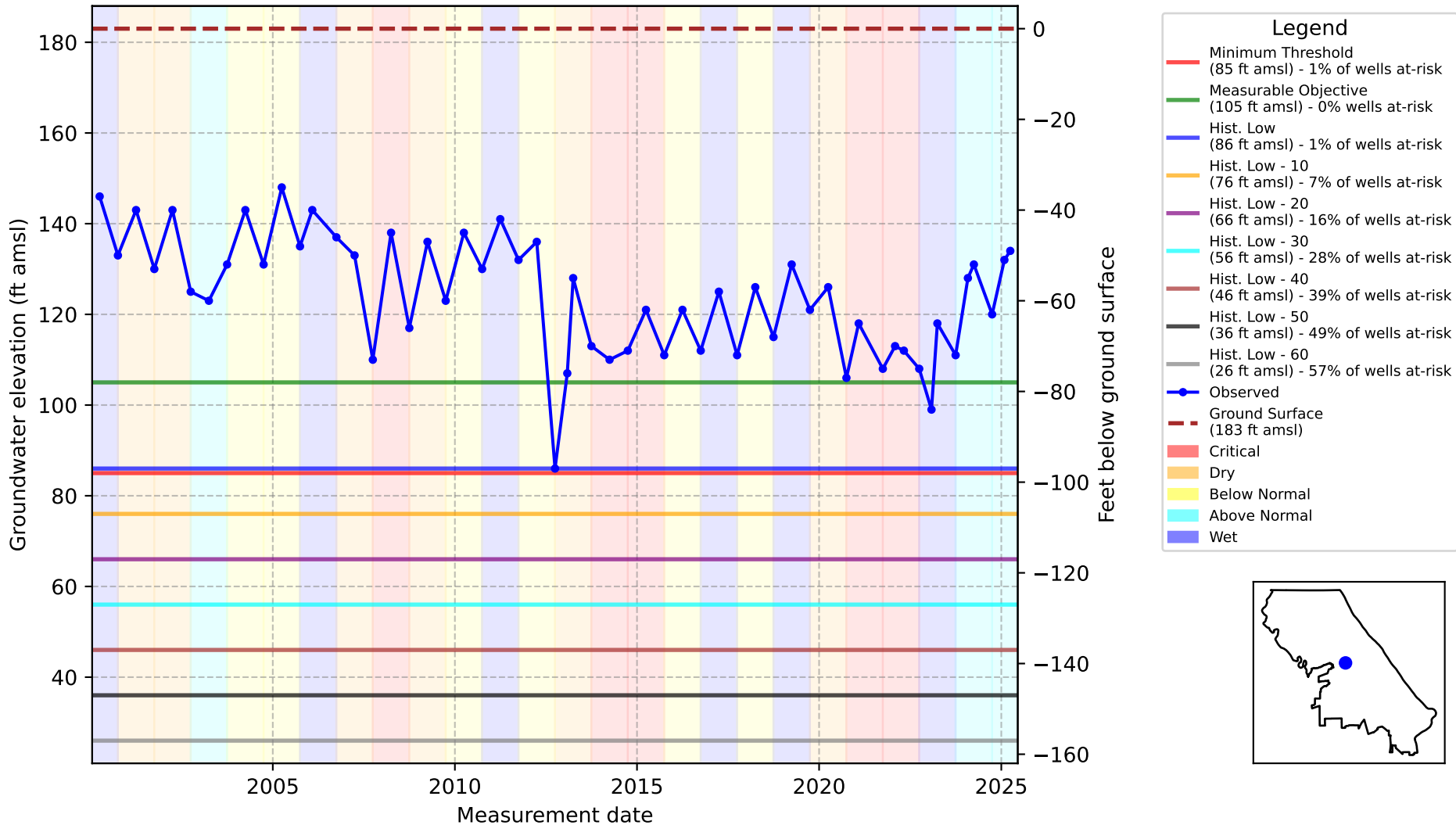
Vina Subbasin - State Well Number (SWN): 23N01E33A001M



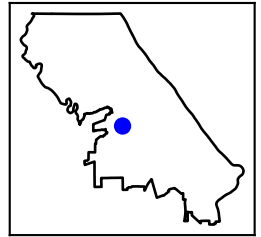
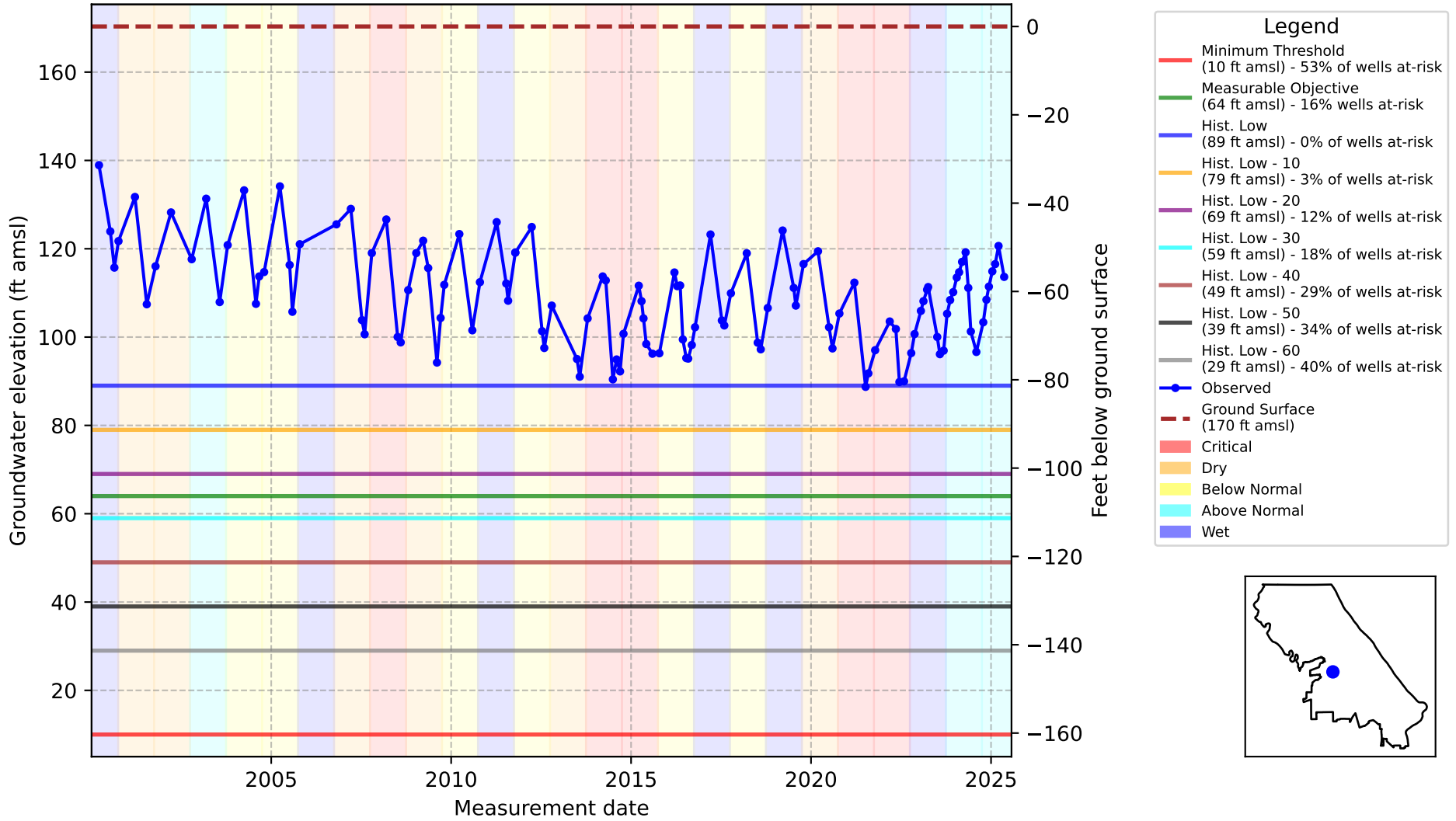
Vina Subbasin - State Well Number (SWN): 22N01E09B001M



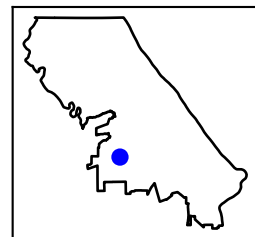
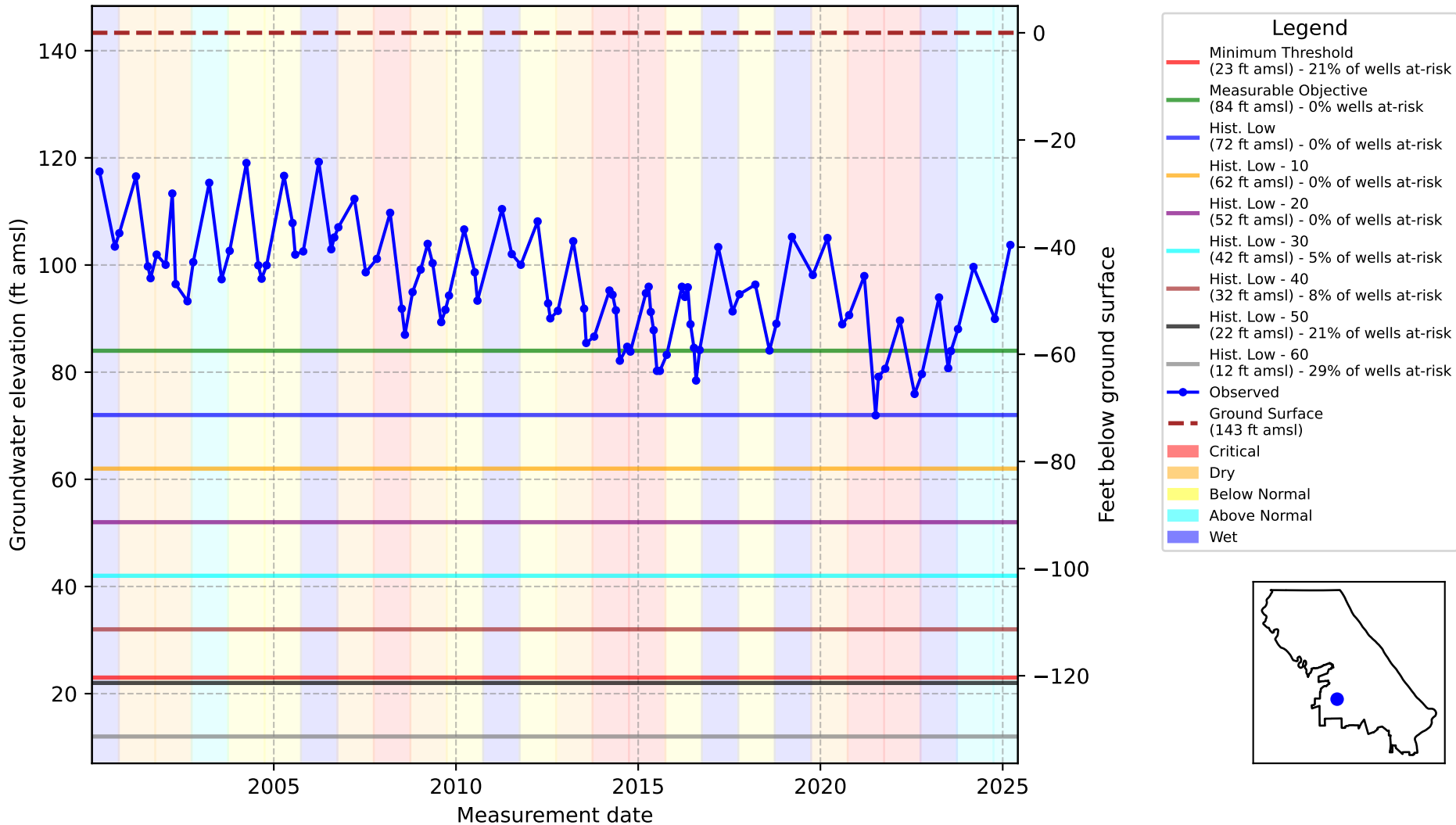
Vina Subbasin - State Well Number (SWN): CWSCH02



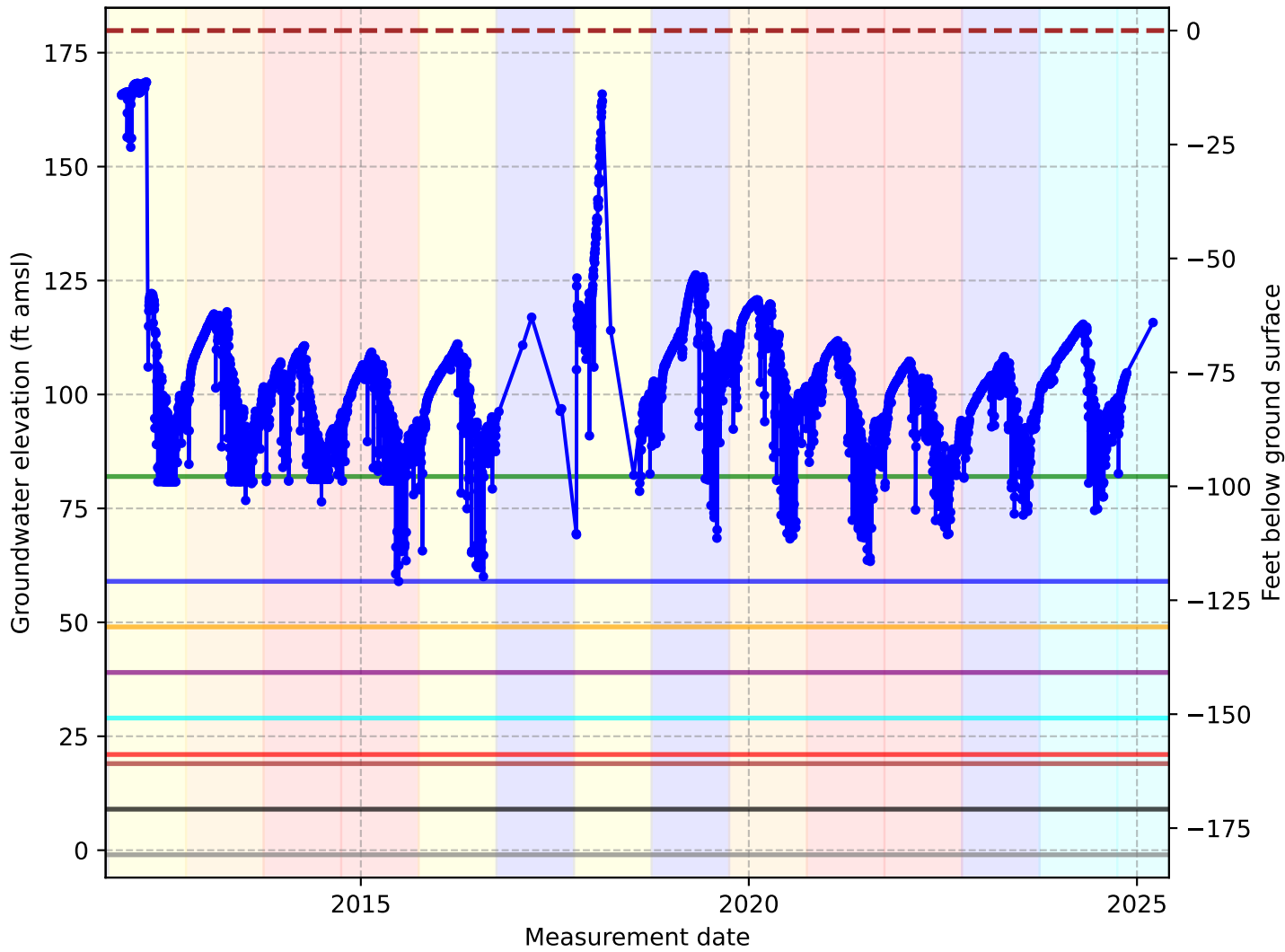
Vina Subbasin - State Well Number (SWN): 21N01E10B003M



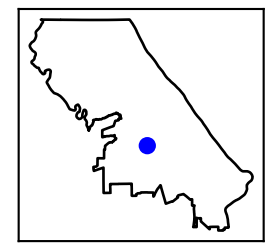
Vina Subbasin - State Well Number (SWN): 21N01E27D001M



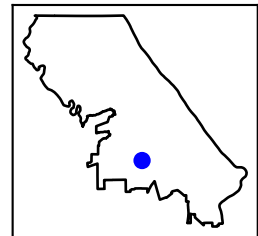
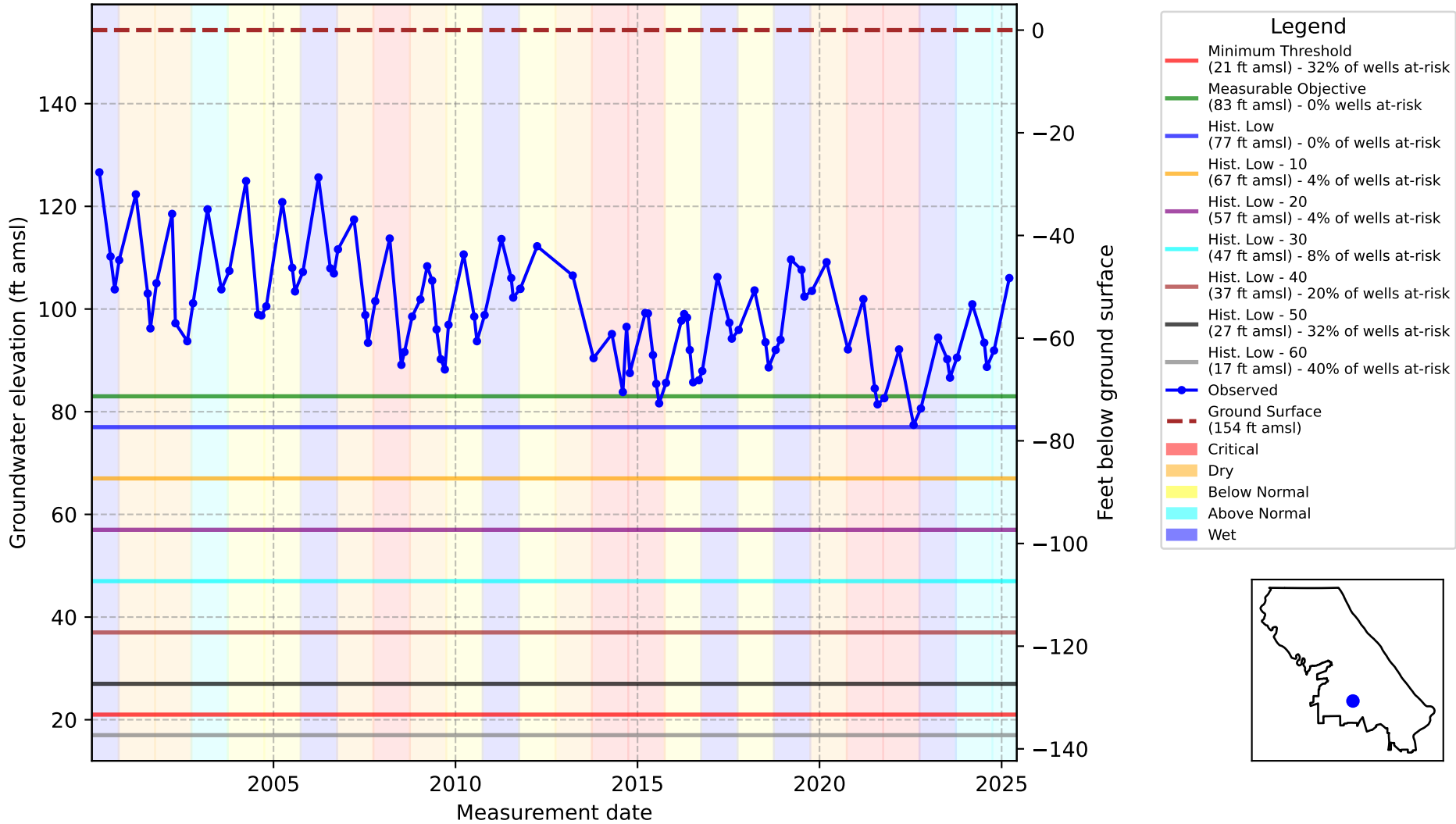
Vina Subbasin - State Well Number (SWN): 21N01E13L004M



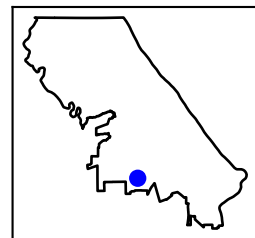
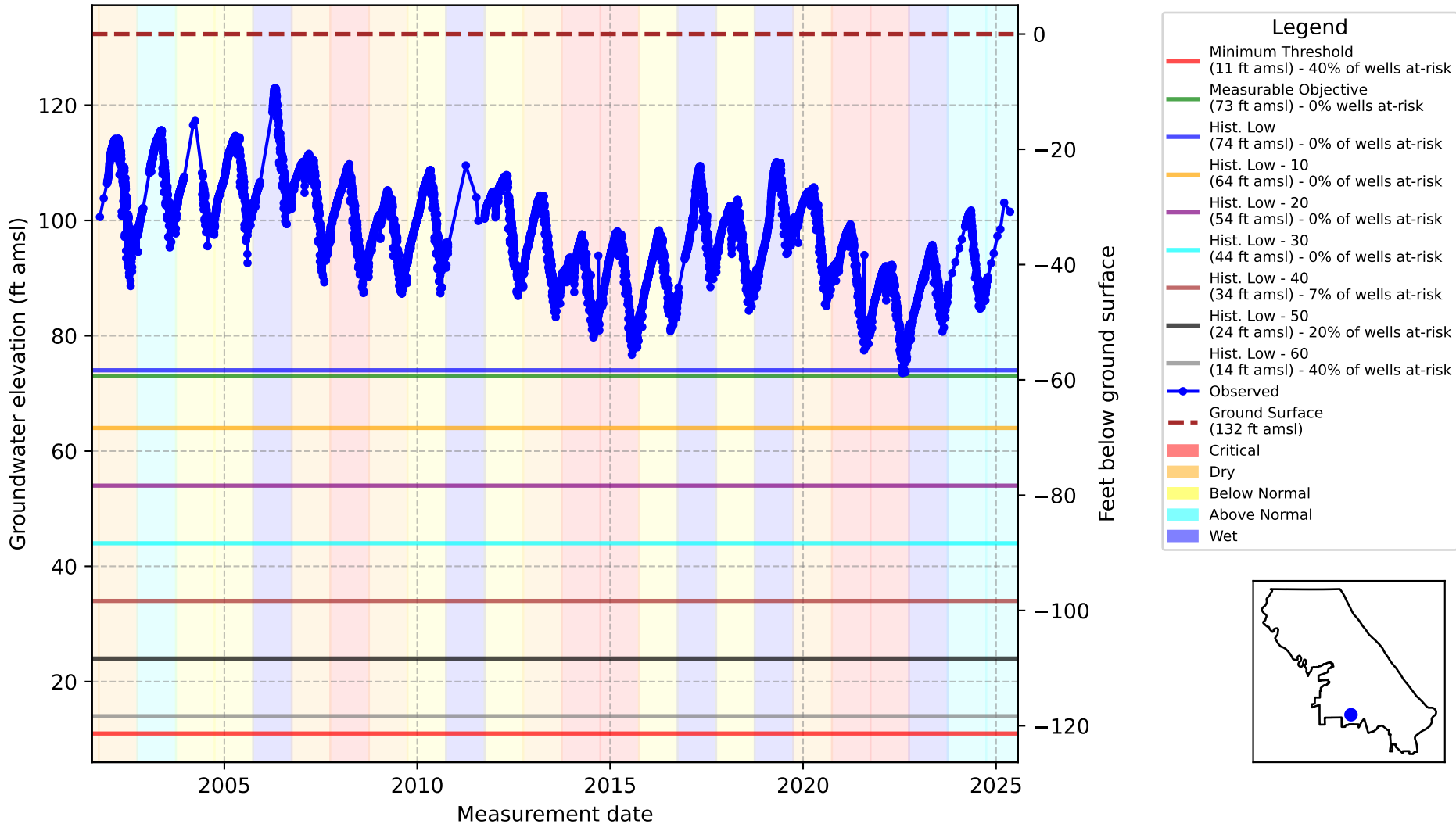
- Legend**
- Minimum Threshold (21 ft amsl) - 37% of wells at-risk
 - Measurable Objective (82 ft amsl) - 0% wells at-risk
 - Hist. Low (59 ft amsl) - 0% of wells at-risk
 - Hist. Low - 10 (49 ft amsl) - 11% of wells at-risk
 - Hist. Low - 20 (39 ft amsl) - 26% of wells at-risk
 - Hist. Low - 30 (29 ft amsl) - 33% of wells at-risk
 - Hist. Low - 40 (19 ft amsl) - 44% of wells at-risk
 - Hist. Low - 50 (9 ft amsl) - 52% of wells at-risk
 - Hist. Low - 60 (-1 ft amsl) - 56% of wells at-risk
 - Observed
 - Ground Surface (180 ft amsl)
 - Critical
 - Dry
 - Below Normal
 - Above Normal
 - Wet



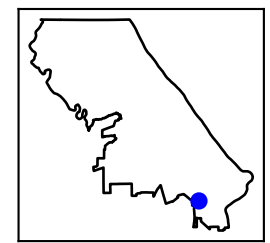
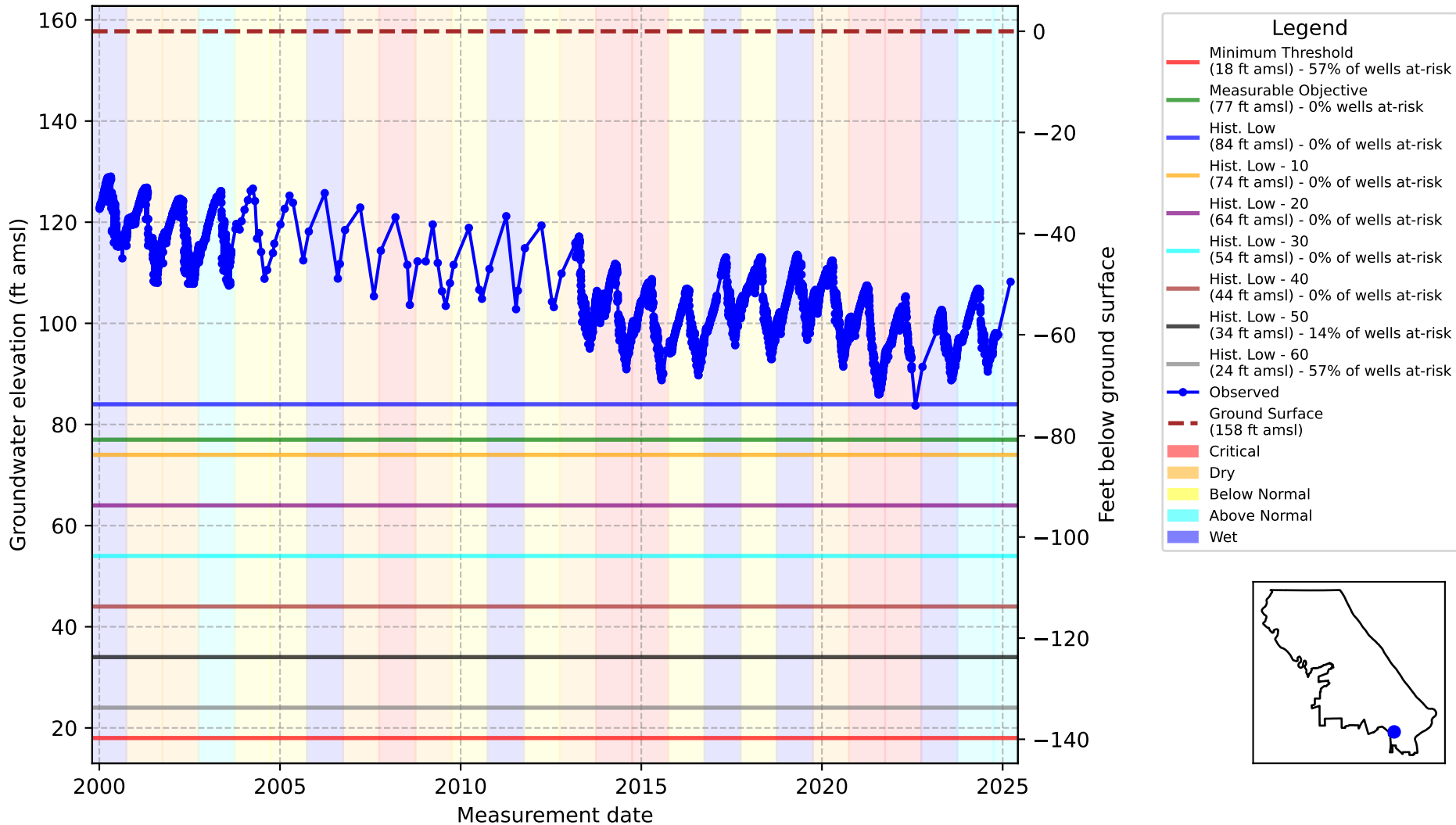
Vina Subbasin - State Well Number (SWN): 21N01E25K001M



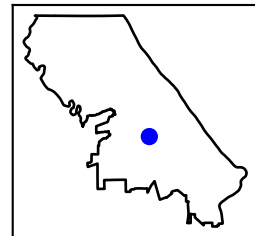
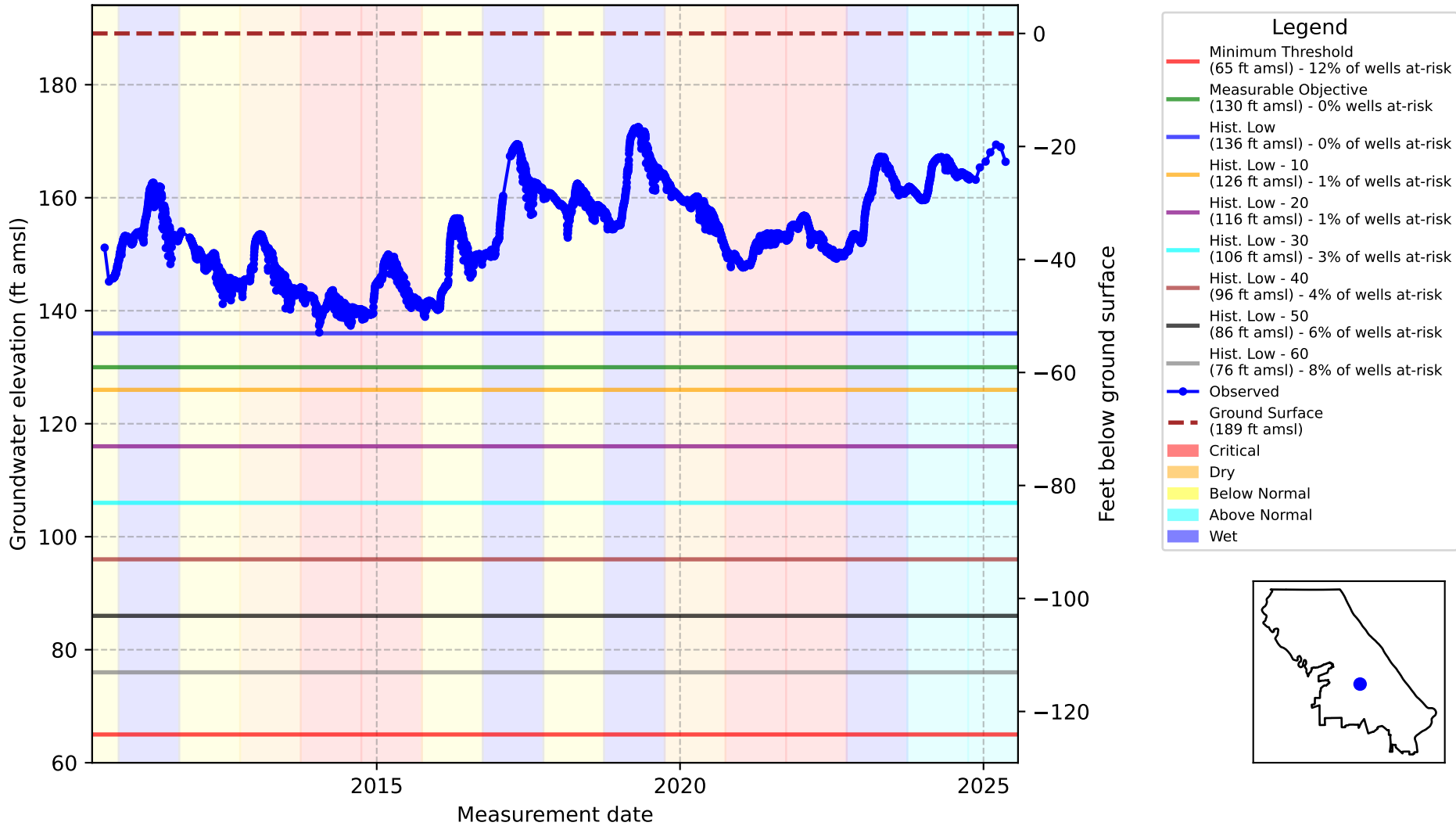
Vina Subbasin - State Well Number (SWN): 20N01E02H003M



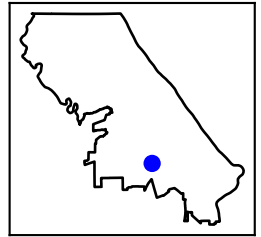
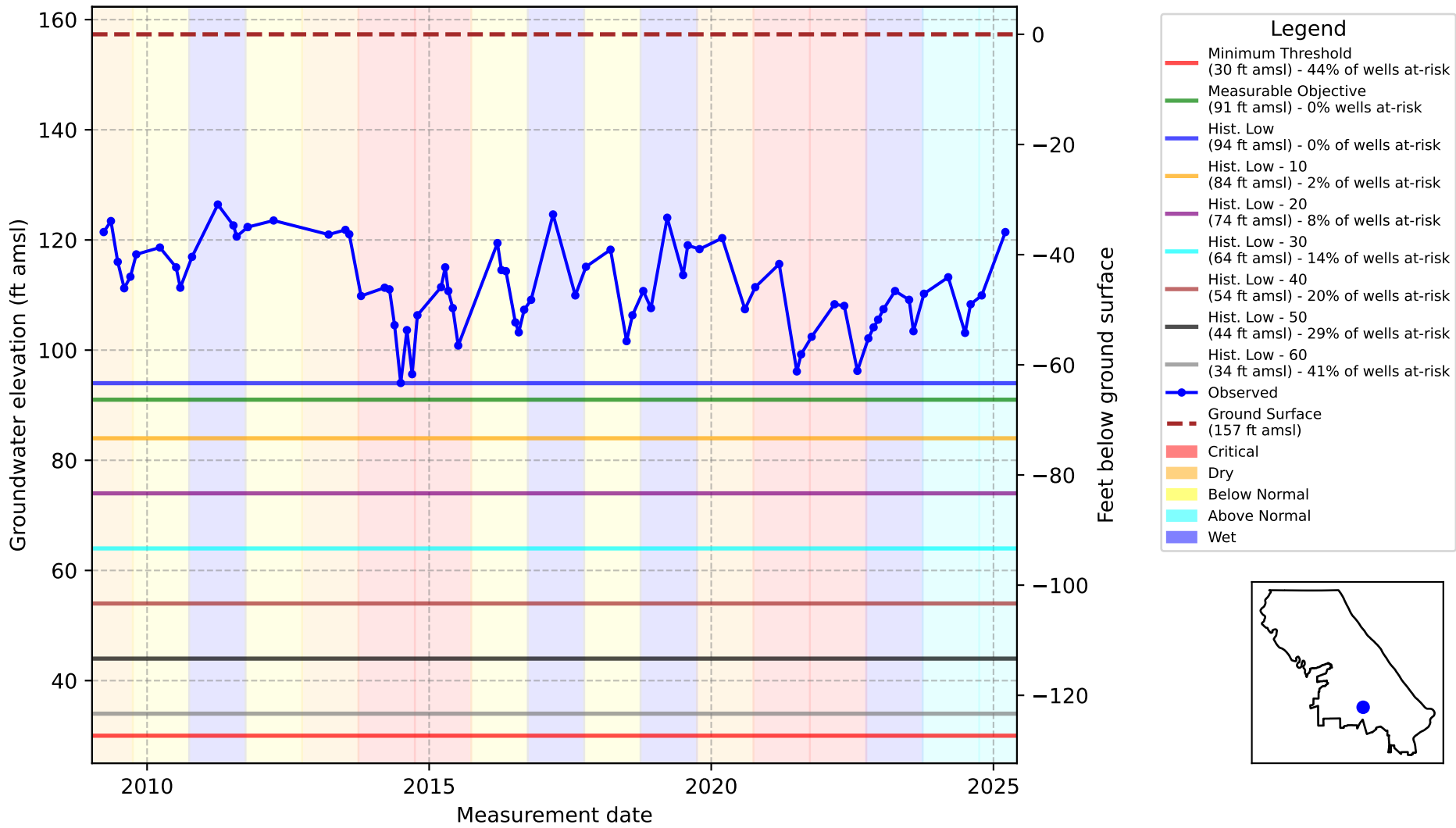
Vina Subbasin - State Well Number (SWN): 20N02E24C001M



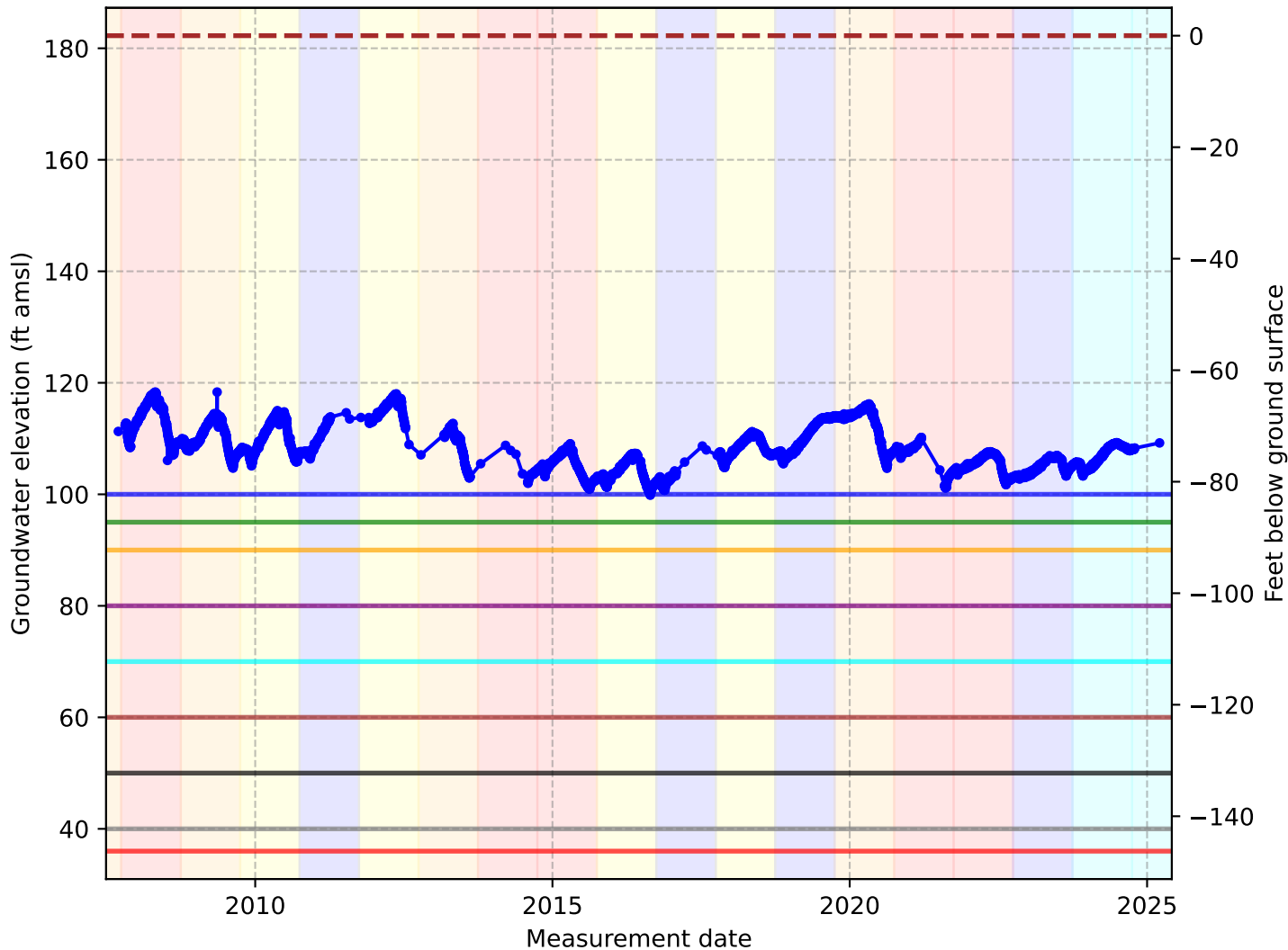
Vina Subbasin - State Well Number (SWN): 21N02E18C003M



Vina Subbasin - State Well Number (SWN): 21N02E32E001M

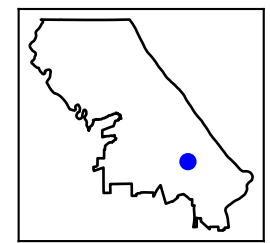


Vina Subbasin - State Well Number (SWN): 21N02E26E006M

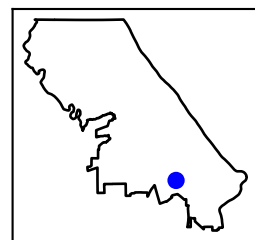
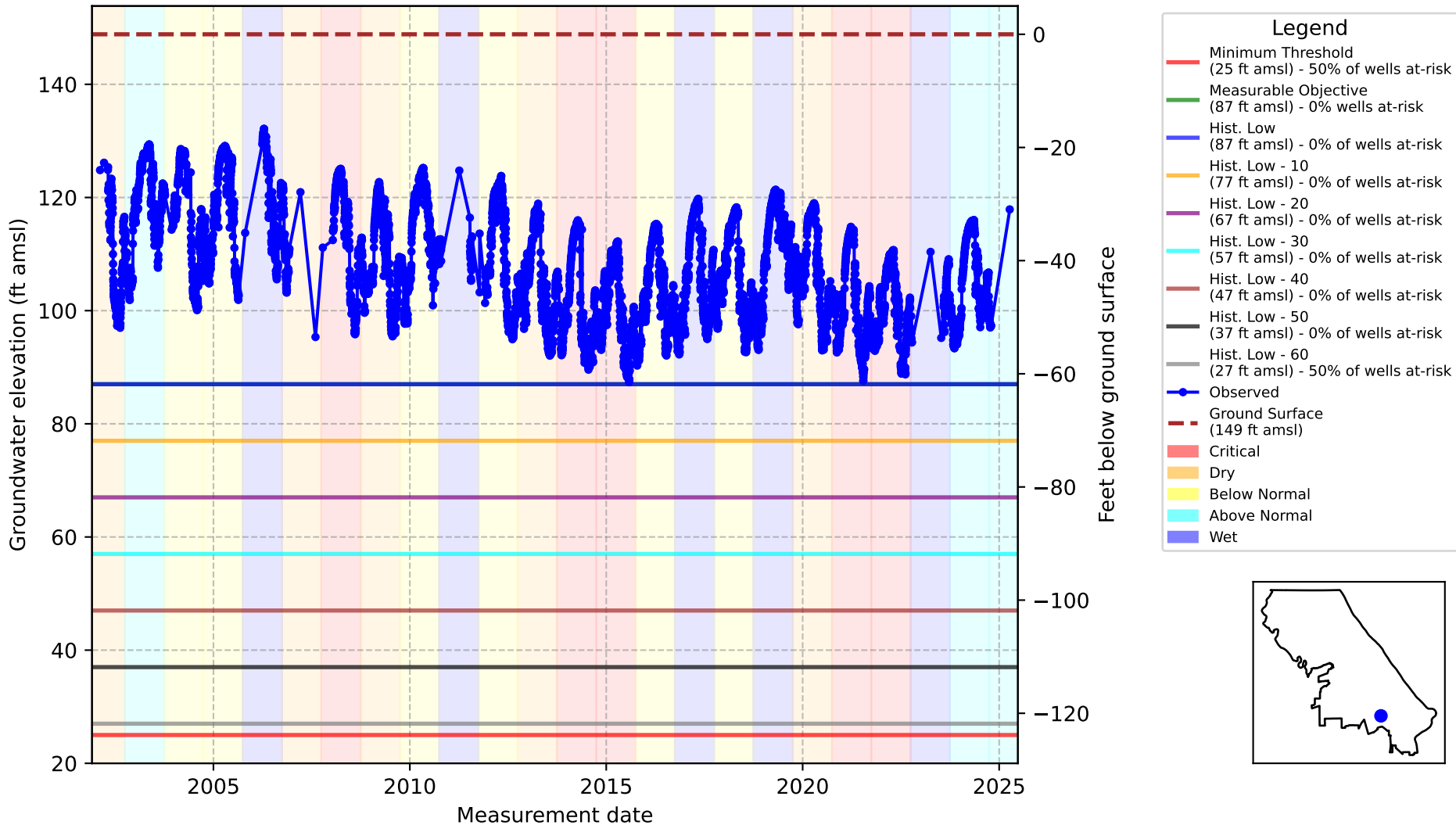


Legend

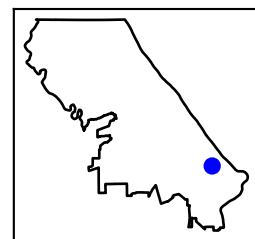
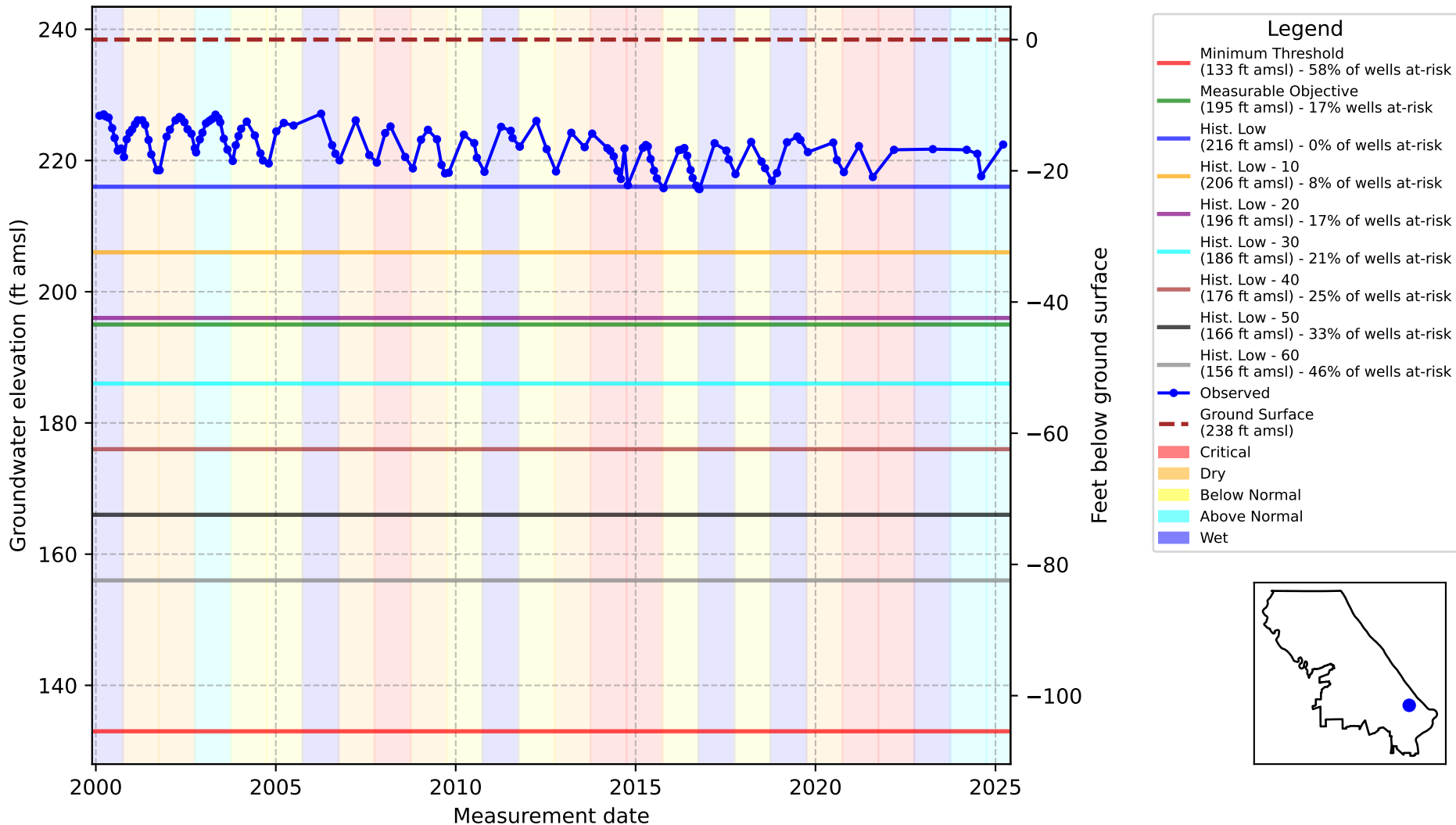
- Minimum Threshold (36 ft amsl) - 50% of wells at-risk
- Measurable Objective (95 ft amsl) - 0% wells at-risk
- Hist. Low (100 ft amsl) - 0% of wells at-risk
- Hist. Low - 10 (90 ft amsl) - 0% of wells at-risk
- Hist. Low - 20 (80 ft amsl) - 15% of wells at-risk
- Hist. Low - 30 (70 ft amsl) - 15% of wells at-risk
- Hist. Low - 40 (60 ft amsl) - 30% of wells at-risk
- Hist. Low - 50 (50 ft amsl) - 40% of wells at-risk
- Hist. Low - 60 (40 ft amsl) - 50% of wells at-risk
- Observed
- Ground Surface (182 ft amsl)
- Critical
- Dry
- Below Normal
- Above Normal
- Wet



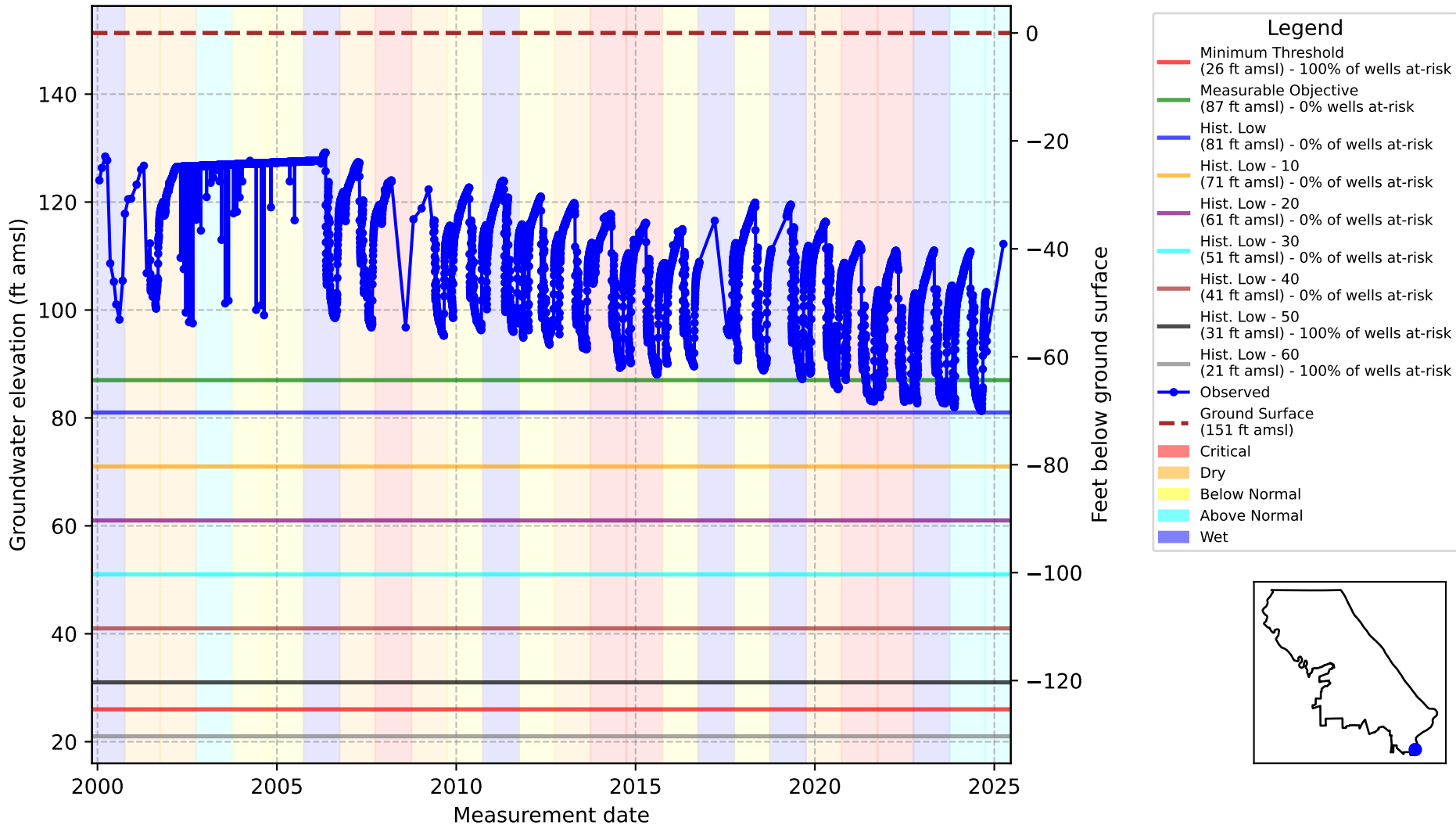
Vina Subbasin - State Well Number (SWN): 20N02E09G001M



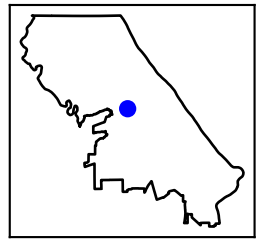
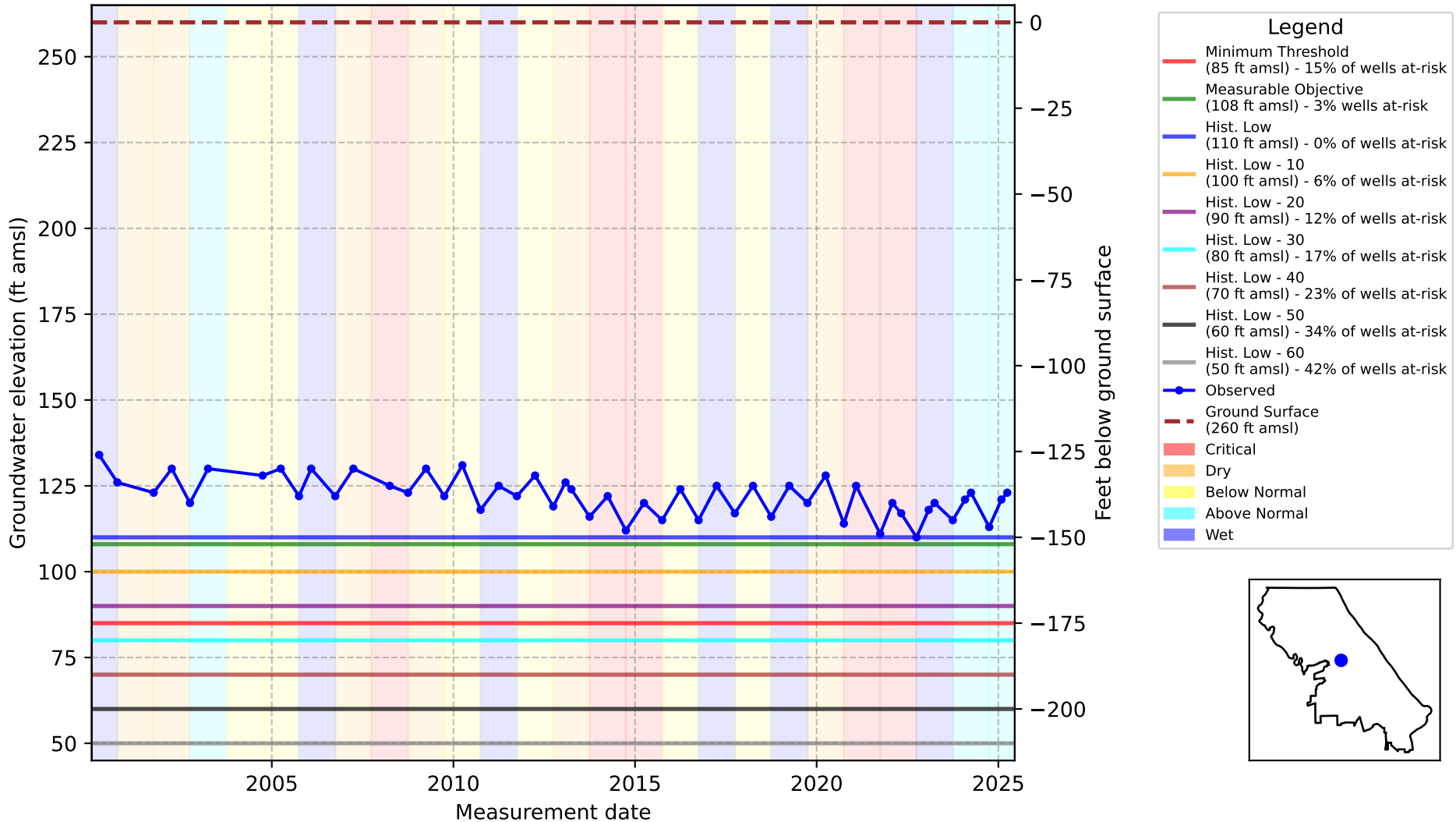
Vina Subbasin - State Well Number (SWN): 21N03E32B001M



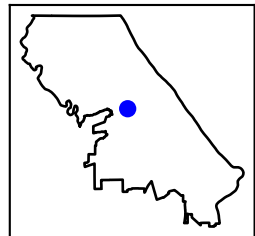
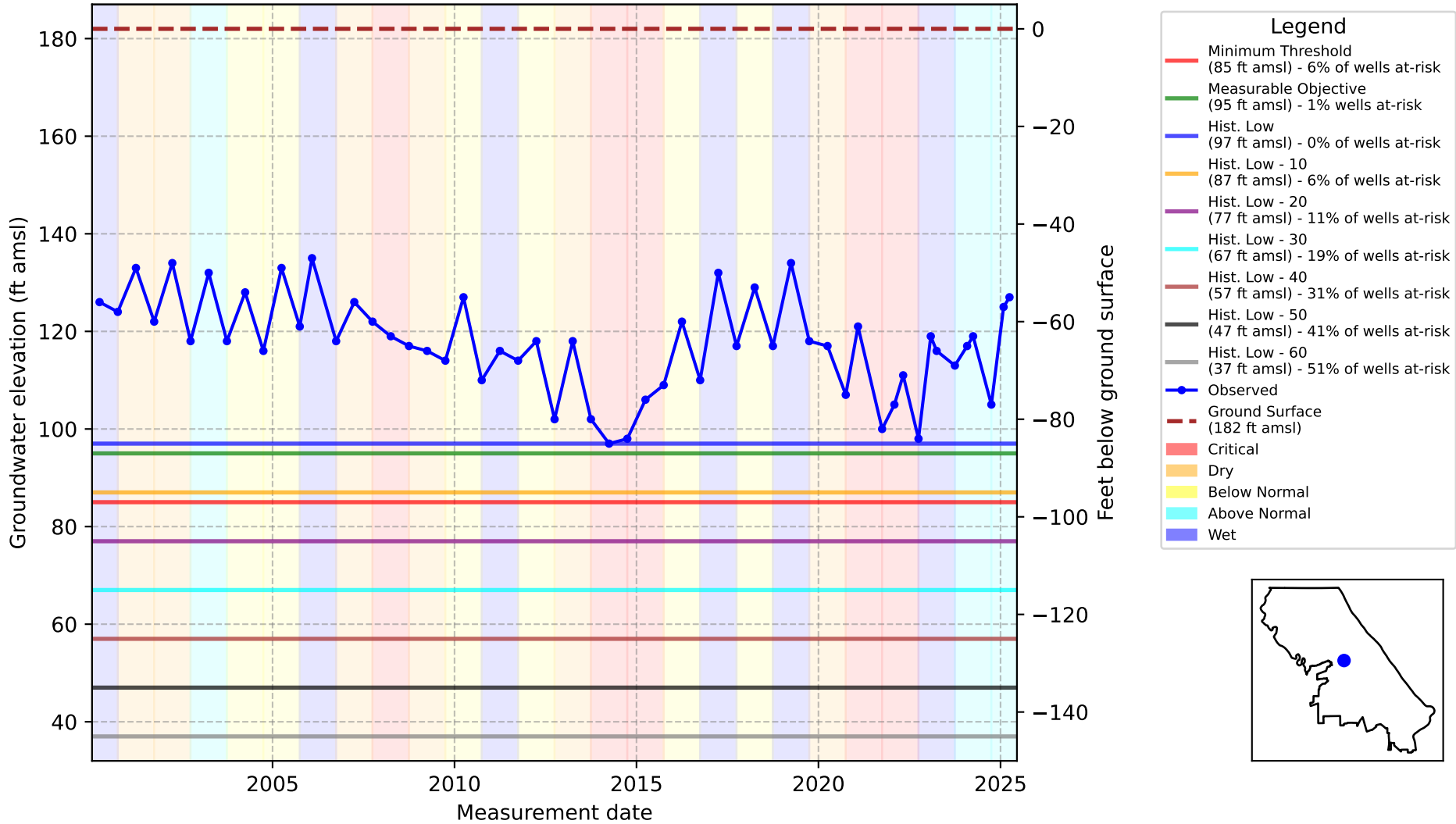
Vina Subbasin - State Well Number (SWN): 20N03E33L001M



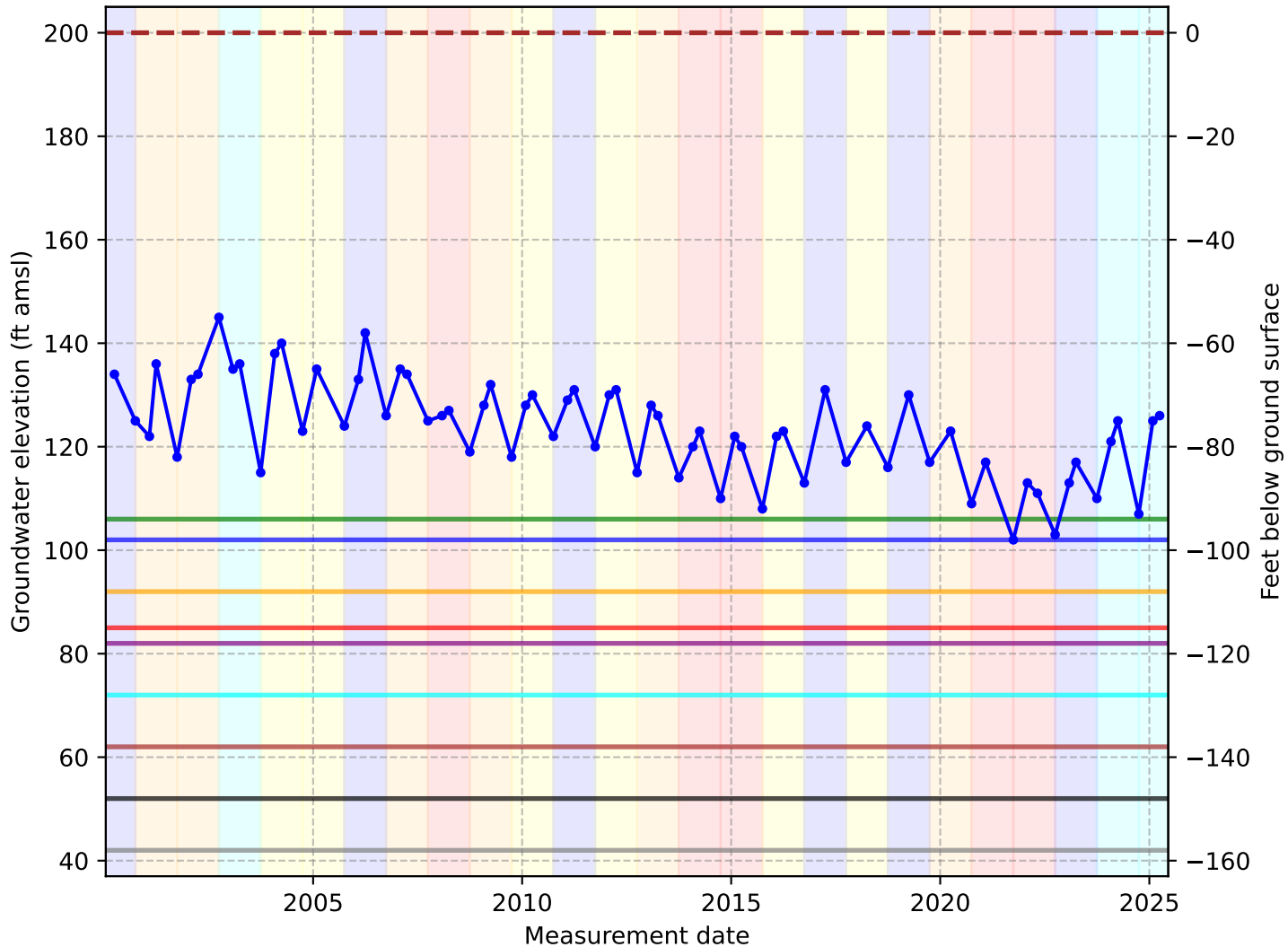
Vina Subbasin - State Well Number (SWN): CWSCH03



Vina Subbasin - State Well Number (SWN): CWSCH07



Vina Subbasin - State Well Number (SWN): CWSCH01b



- Legend**
- Minimum Threshold (85 ft amsl) - 10% of wells at-risk
 - Measurable Objective (106 ft amsl) - 0% wells at-risk
 - Hist. Low (102 ft amsl) - 0% of wells at-risk
 - Hist. Low - 10 (92 ft amsl) - 7% of wells at-risk
 - Hist. Low - 20 (82 ft amsl) - 12% of wells at-risk
 - Hist. Low - 30 (72 ft amsl) - 18% of wells at-risk
 - Hist. Low - 40 (62 ft amsl) - 30% of wells at-risk
 - Hist. Low - 50 (52 ft amsl) - 37% of wells at-risk
 - Hist. Low - 60 (42 ft amsl) - 48% of wells at-risk
 - Observed
 - - - Ground Surface (200 ft amsl)
 - Critical
 - Dry
 - Below Normal
 - Above Normal
 - Wet

